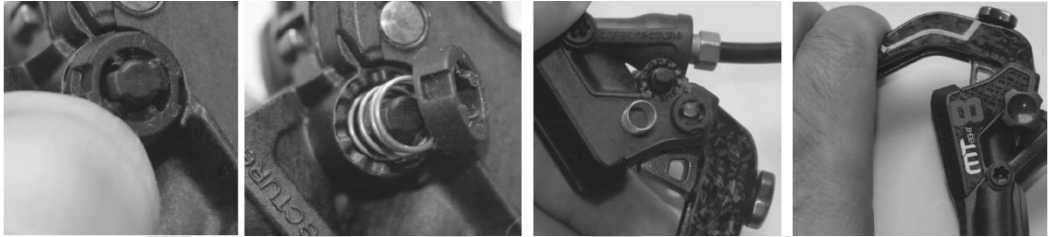



MAGURA
Leverblade change MT2 – MT8
MT2-MT8 拉柄更換

 Overview MT next
 MT 拉柄總覽


At MT model with BAT. Press the locking disc, rotate 90° and remove it with the clamp spring.

Pull the leverblade and take out the BAT adjuster or Cover.

以配置 BAT 調整棒的 MT 煞車為例，壓下固定環並轉向 90 度連同彈簧一併移除，然後拉住拉柄並取出 BAT 調整棒或上蓋。



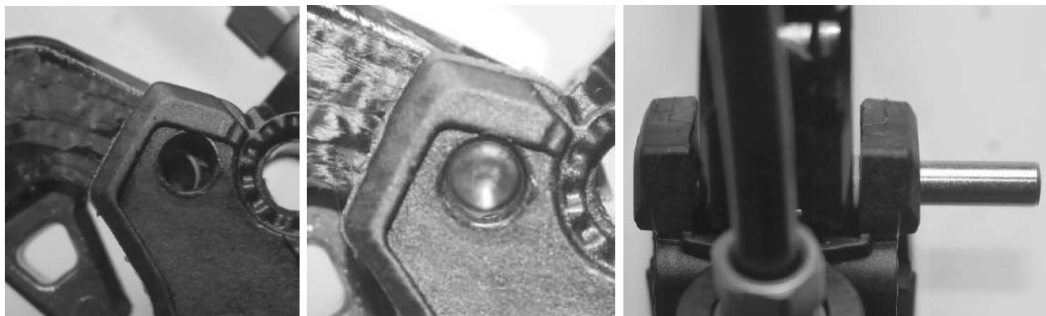
Lift up the Cover carefully, use a punch and take out the pin from LEFT to RIGHT.

小心拉起煞把本體飾板，使用工具輕輕敲擊一下煞把本體與拉柄之間的拉柄插銷，拉柄正面朝向操作者的方向，由左至右用力推出拉柄插銷，直到可以順利取下拉柄。



ATTENTION: Take care of the correct position of the spring at MT2, MT4 and MT5.

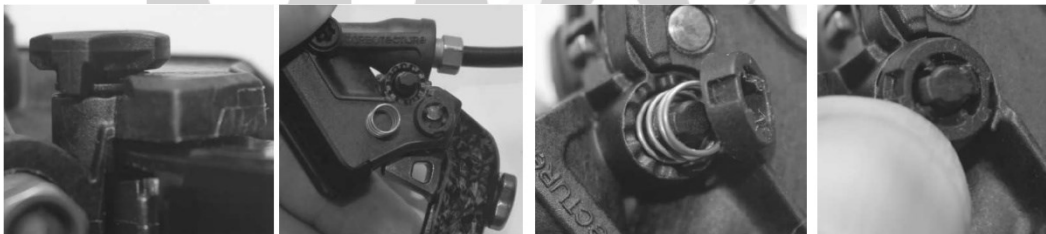
注意：MT2、MT4、MT5 拉柄，請留意彈簧正確的安裝位置。



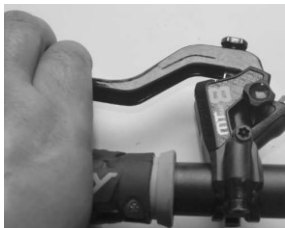
Take care for the correct position of the lever blade and push the pin from the right side carefully in.
請留意煞把本體與拉柄的同心位置，然後從右側將拉柄插銷小心推入。



Press in the pin with a punch until it will be flush. Pull the lever blade and install the BAT or Cover.
使用工具將拉柄插銷輕輕敲入直到均勻密合煞把本體，然後拉住拉柄並安裝 BAT 調整棒或上蓋。



Position Clamp spring with locking disc, press and rotate 90° until it snap in.
放入彈簧與固定環，壓下固定環並轉向 90 度直到完全固定於卡槽。



Check the function.
檢查拉柄的作動與功能是否正常。

Download the complete manual on www.magura.com
欲下載完整版手冊，請上官方網站 www.magura.com
Specifications are subject to change without prior notice!
規格如有變更，恕不另行通知！

MAGURA
© MAGURA