

2020

MOBILITY SOLUTIONS

BIKE
PERFORMANCE COMPONENTS



MAGURA



ABOUT MAGURA 关于玛古拉

4

MAGURA STORY 玛古拉历史	4
HIGHLIGHTS 2020 亮点2020	6
MAGURA eCOMPETENCE 玛古拉电动车技术	8
CUSTOMIZE YOUR BRAKE 定制您的刹车	10
MAGURA COCKPIT INTEGRATION (MCi) i世代创新：遇见未来的MCi	12
MAGURA ORIGINAL SPARE PARTS 玛古拉原厂配件	14
MAGURA TECHNOLOGY 玛古拉全球独家科技	16

PRODUCTS 德国精品

18

PRODUCT OVERVIEW 2020年产品总览	18
DISC BRAKES 液压碟刹	20
RIM BRAKES 液压轮圈刹	34
S-PEDELEC BRAKES 高速电动自行车刹车	40
DROPPER SEATPOST 无线升降座管	46

TUNING PARTS 个性化你的刹车

50

LEVER BLADES 我选我刹：刹把	52
RING-KITS 我选我刹：卡钳环	54
INDIVIDUAL COVERS 我选我刹：个性饰板	54
HANDLEBAR CLAMPS 我选我刹：刹把固定环	55

ORIGINAL SPARE PARTS 高品质原厂补修件

56

BRAKE PADS OVERVIEW 刹车块与来令片总览	59
BRAKE PADS 刹车块与来令片	60
ROTORS 超神后援：各式特色碟盘	62
ADAPTER 转接座	64
SERVICE PRODUCTS 维修保养产品	66

APPAREL 玛古拉专属人身部品

68

SPONSORED RIDERS MAGURA运动员家族	72
ASIAN ATHLETES 亚洲运动员	73
5 YEARS WARRANTY 享有玛古拉 这件事你一定要知道!	74
PRODUCT TABLE: BRAKES 刹车产品一览表	75



A LOOK AT THE STORY OF MAGURA WITH FABIAN AUCH 玛古拉的故事 关于法比安·奥赫

Photo: MAGURA

When the long-standing Swabian company MAGURA introduced the first hydraulic bicycle brake to the market in 1987, it proved to be an invention that heralded a sweeping change. The legendary Hydro Stop (HS) rim brakes were part of numerous victories in the Mountain Bike World Cup, changing not only the face of mountain biking and racing, but also the business orientation of MAGURA itself, which at the time mainly specialized in motorcycle products.

Looking back on the achievements of that period, Fabian Auch, CEO of the MAGENWIRTH Technologies holding company says, "With the HS rim brake, MAGURA paved the way for hydraulic components to be used on bicycles. Our HS rim

brakes are still among the most successful products in our range".

The HS was followed by the first hydraulic disc brake for mountain bikes – the highly acclaimed Gustav M, also called "Swabian brake anchor". Nowadays it's the MT7 that accompanies world class athletes in the World Cup.

"Collaborating with athletes is a time-honoured tradition in the development of new products. Even my great-grandfather, Gustav Magenwirth, drove a racing bus through the country to support racing drivers in their competitions and obtain important feedback for new developments," says Fabian Auch. MAGURA still provides race support for athletes all over the world.



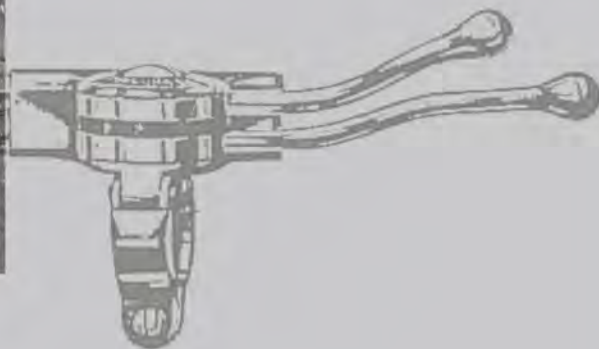
Photo: MAGURA

玛古拉，位于德国施瓦本且有着历史悠久的公司，在1987年将首个液压自行车刹车推向市场。事实证明，这是一项预示着颠覆性变化的发明，颇具传奇色彩的Hydro Stop (HS) 轮圈刹，也在胜利者众多的山地自行车世界杯中，拥有了不可撼动的一席之地。这不仅是对山地自行车和山地自行车竞赛的外在改变，更是对玛古拉自身商业定位的改变，因为当时玛古拉主要专注于摩托车产品。

回顾这一时期的成就，玛耿威特科技控股公司首席执行官法比安·奥赫说：“得益于HS轮圈刹，玛古拉为在自行车上使用液压组件铺平了道路。我们的HS系列轮圈刹仍是我们系列中最成功的产品之一。”

紧随HS轮圈刹之后，是第一款用于山地自行车的液压碟刹——广受赞誉的古斯塔夫·M，也被称为“施瓦本刹车之锚”。今天，玛古拉MT7与世界一流运动员相伴左右。

“与运动员合作是玛古拉开发新产品的悠久传统。甚至我的曾祖父古斯塔夫·玛耿威特都曾驾驶一辆赛车穿越国家，来支持赛车手参加比赛，并以此获得有关新发展的重要反馈。”法比安·奥赫说。玛古拉坚持为全世界的运动员提供比赛支持。



The company has always been committed to continuously improving things that are already good. One result of this approach is the current #customizeyourbrake philosophy, thanks to which MAGURA disc brakes can be perfectly customized to match individual riding styles – and here too, MAGURA consistently relies on the feedback of its athletes. The individual brake setup for maximum performance lies at the heart of this philosophy, for professionals and hobby riders alike. Passing on its racing experience to the biking world is a very important creed in the history of the company.

MAGURA is particularly proud of the new HC LOIC BRUNI lever blade, which helped the Frenchman to his second successive Downhill World Champion title.

However, MAGURA doesn't stop at driving new developments in racing. For decades, the car was regarded as the means of transport. Nowadays, however, bicycles and e-bikes are playing an increasingly important role in everyday life – and e-bikes and

s-pedelecs have meanwhile firmly established themselves as serious transport alternatives. To get bicycle riders comfortably and safely to their destinations, MAGURA develops new integration solutions and safety systems for alternative mobility concepts. These solutions include the BOSCH e-bike ABS developed together with Bosch, and the trailblazing MAGURA Cockpit Integration (MCi) – the first production-ready integration of handlebars and brakes.

This pioneering spirit is deeply anchored in MAGURA's DNA. Today, MAGURA's fourth generation still works together in an entrepreneurial, independent and family-oriented manner – and since its foundation in 1893, the company's innovative strength has crystallized into the main factor in its success.

"As my great-grandfather once did, we continue to drive the development of our products to establish ourselves as innovative pioneers."

— Fabian Auch.



Photo: AMALINDA

PASSION & INNOVATION

玛古拉一直秉承精益求精的风格。“定制你的刹车”这一理念便是这一风格的诠释，因此，玛古拉碟刹能够完美地进行个性化定制，进而匹配个人的骑行风格，当然，玛古拉也始终依靠运动员的反馈，我们彼此成就。无论是自行车专业人士还是业余爱好者，个性化的刹车定制，均是我们这一理念的核心服务对象。一直以来，将赛车经验传递到自行车界是玛古拉非常重要的信条。

玛古拉特别为新的HC LOIC BRUNI刹把引以为豪，它连续两次助力法国车手摘得速降世界冠军桂冠。

然而，玛古拉并未止步推动赛车的新发展。几十年来，汽车一直被视为交通工具。可是，今天自行车和电动自行车也在日常生活中发挥着越来越重要的作用，同时，电动自行车和高速电动助力车，已经牢固地确立了自己作为重要的交通替代品的地位。为了使骑行者舒适安全地到达目的地，玛古拉为代替性出行概念，研发出新的整合式解决方案和安全系统；这些

解决方案包括与博世共同开发的BOSCH电动自行车ABS，以及开拓性的MAGURA Cockpit Integration MCi——首次将车把和刹车投入生产。

这种开拓精神深深植根于玛古拉的基因。如今，玛古拉的第四代掌门人仍以企业家，独立和面向家庭的方式合作。自1893年成立以来，玛古拉的创新实力已成为其成功的主要因素。

“就像我曾祖父曾做的那样，我们持续推动我们产品的研发，让自己成为创新的先驱。”

—法比安·奥赫

HIGHLIGHTS 2020

THIS IS NEW

2020新品亮丽出击

→ P. 52

HC LOIC BRUNI LEVER BLADE

Short lever blade and a long reach – that's Loic Bruni's individualized lever blade. The new aluminium HC LOIC BRUNI lever blade was designed exactly in accordance with the wishes of the downhill world champion. The 3D metal printing process enables the production of lever blades that combine low weight, a high level of rigidity and elaborate hollow spaces that contribute to a unique design.

The HC LOIC BRUNI lever blade is ideal for all riders who want their lever blades to have a wider reach from the handlebars or for those with larger hands.

世界冠军指定：HC LOIC BRUNI拉柄

拉柄短且握距长是Loic Brunis拉柄的独特个性。这款新型铝制HC LOIC BRUNI拉柄的设计极大满足了速降车手在世界冠军赛中的需求。3D打印技术使得轻量、高韧性中空拉柄成为可能，这些都得益于产品独特的设计。

HC LOIC BRUNI对长握距需求或手长的车手来说可谓理想选择。



MDR-C AND MDR-P ROTORS

MAGURA presents two newly-developed rotors for the coming season. The MDR-C is a universal rotor suitable for use with all types of bicycles. The one-piece rotor, including its inner ring and connecting ring has high level lateral stiffness reducing noise and increasing heat resistance and stability.

With the MDR-P, MAGURA presents the new flagship of its rotors for performance-oriented riders and tougher applications– from downhill and e-bikes to heavy cargo bikes. The two-piece rotor is available for the first time in 220 mm diameter and offers optimum braking performance even under heavy loads, thanks to the patented interlocking of the outer and inner rings (Dovetail Interlink Technology).

这盘不让： MDR-C与MDR-P碟盘

MAGURA两款新的碟盘MDR-C和MDR-P已问世。

MDR-C是适用于所有型号自行车的“万能”碟盘。该碟盘分为内环和连接环两部分，以减少噪音、增加耐热性。

MAGURA生产的另一款新的碟盘是MDR-P，既适合最初的进阶阶段的车手，也很好适用于速降车、电动助力车、高负荷车。

MDR-P提供220mm，即使是在速降状态下也能提供很好的性能，彰显内锁式内外环碟盘的优势。(包含内部连接技术)



→ P. 62

→ P. 59

SPORT BRAKE PADS

The organic SPORT brake pads are suitable for both everyday as well as sport cycling – and are ideal for use on e-bikes. They are positioned between the MAGURA COMFORT and PERFORMANCE pads in terms of braking power and durability. Thanks to their shorter bed-in time, the new SPORT brake pads are ready for full use very quickly.

大四喜：运动型来令片

SPORT运动型来令片，既适合日常骑行车也适合运动骑行车，同时也是备受电动助力车的青睐。在刹车制动力和韧性上，该产品处于MAGURACOMFORT舒适型和MAGURAPERFORMANCE功效型之间。同时，SPORT更短的磨合期需求，使得其能够更快的进入到使用状态。



→ P. 30

MT eSTOP TECHNOLOGY

With its new MT eSTOP brakes, MAGURA presents two disc brakes that are specially adapted to e-bike requirements. The combination of the new SPORT brake pads and the MDR-C or MDR-P rotors offer an increased braking power and stability which are perfect for e-bikes!

In addition to the MT4 eSTOP and MT5 eSTOP brake models, MAGURA also offers an e-bike optimized upgrade kit for all MAGURA MT disc brakes consisting of SPORT brake pads and MDR-P or MDR-C rotors. It can be retrofitted to existing e-bikes.

电动车专用：MT eSTOP技术

搭配MT eSTOP拉柄使用的两活塞卡钳很好的满足了电动自行车的需求。该卡钳搭配SPORT来令片和MDR-C或MDR-P碟盘在电动助力自行车上的使用，展现了其完美的制动力与稳定性。

除了MT4 eSTOP和MT5 eSTOP的全新外观，MAGURA电动助力车而且是对所有的MAGURA MT系列产品，包含SPORT运动型来令片和MDR-C或MDR-P碟盘在内的优化升级。这是现有电动助力自行车的一种革新一代。

STAY CONNECTED!


MAGURA News

To make it really convenient for everybody to be well informed, we post updates on our website, Facebook and Instagram.

MAGURA 最新讯息

网站、脸书和一些社交媒体上都发布有我们产品介绍，以便让每个人更好的了解，微信公众号二维码于图册封底。

→  magura.com

→  facebook.com/magurapassionpeople

→  instagram.com/magura_official



MAGURA eCOMPETENCE

BRAKE KNOWLEDGE FOR A NEW ERA

玛古拉电动技术创新纪元

MAGURA eCompetence

In the last few years, electric mobility concepts have been established themselves as a sustainable alternative to the car. e-bikes and s-pedelecs have become a familiar sight in the traffic landscapes of inner cities and are bringing more and more people quickly and safely to their destination. However, the increasing importance of e-mobility also requires tailor-made solutions to meet the new challenges, as bicycles are becoming heavier and faster and are often now transporting larger loads. Nevertheless, arriving safely remains top priority.

With products developed especially for e-bikes and s-pedelecs, MAGURA actively contributes to more safety, enjoyment and comfort on two wheels. MAGURA's know-how comes from many years of experience in the bicycle and motorcycle sectors. The combination of knowledge from both sectors forms the core of MAGURA's e-competence, which is reflected in the development of specialized products. While a large part of the product range was previously "e-bike ready", MAGURA is now

presenting new, e-bike optimized developments for the 2020 model year.

The new MT eSTOP brakes are available as 2- or 4-pistons version and are characterized by their higher braking power and stability – perfect for e-bikes! Also included are new, SPORT brake pads optimized for the e-bike as well as the new e-bike-optimized MDR-C and MDR-P rotors. In order to cope with the higher weight of e-bikes, MAGURA is offering rotors with a diameter of 220 mm for the first time that provide enough stability and reliable braking, even on long descents.

MAGURA also offers the MT5e, MT4e and HS33e brake systems, specially designed for s-pedelecs. With an integrated switch that activates the brake light before the braking action occurs, effectively warning those following road users as well as switching off the drive unit during the braking process (depending on the drive unit manufacturer).

Thanks to the ECE standard and the ABE (National Type Approval), the corresponding brake pads and rotors can be retrofitted to s-pedelecs without problems, provided that the bicycle model is listed on the application list. They no longer need to be certified by the German Technical Inspection Authority (TÜV), meaning that both the dealer and rider are legally on the safe side.

Corporate partnerships also benefit from the eCompetence. For example, Bosch developed the first production-ready BOSCH e-bike ABS in collaboration with MAGURA. It ensures controlled braking even under difficult conditions and reduces the risk of the front wheel locking or a trip over the handlebars because of a surprise brake maneuver.



MAGURA的电动自行车能力

在过去的几年中，电动出行概念已经确立继汽车之后的可持续替代品。电动自行车和高速电动助力车已成为城市交通景观中的熟悉场景，它们正在把越来越多的人快速安全地送达目的地。然而，正由于电动出行的重要性日益增加，它也提出用量身定制的解决方案来应对新的挑战的要求：比如越变越重的车身，越骑越快的速度，越来越频繁的运输任务。尽管如此，安全到达仍然是重中之重。

随着产品的发展升级尤其在电动自行车和高速电动助力车方面，玛古拉积极致力于为两轮事业提供更高的安全性，娱乐性和舒适性。玛古拉的专业知识是从自行车和摩托车领域的多年经验而来。这两个部门知识的结合反映在专业产品的开发上，即构成了玛古拉电子竞争力的核心。虽然以前大部分产品系列都已经“电动自行车就绪”，但玛古拉现在展示的正是2020年经过优化的新电动自行车研发新成果。

新型MT eSTOP系列刹车有两活塞或四活塞两个版本，其特点是具有更强的刹车力道和更好的稳定性，非常适合电动自行车！还包括针对电动自行车进行了优化的新型SPORT运动型来令片和MDR-C和MDR-P碟盘。为了适应重型电动自行车，玛古拉首次提供了直径为220毫米的碟盘，即使在长时间下坡的情况下也能提供足够的稳定性和可靠的制动力。

玛古拉还提供专门为高速电动助力车设计的MT5e，MT4e和HS33e刹车。借助一个集成的开关，该开关在我们按压刹车的同时，先激活制动灯，可以有效地提醒身后的车辆，并在制动过程中关闭电机(取决于车辆的制造商)。

得益于ECE标准和ABE(德国国家认证)，现在只要是应用列表中列出了的自行车型号，相应的刹车块和碟盘都可以毫无问题地改装成高速电动助力车，而且不再需要获得德国技术检验局的认证，这意味着经销商和骑行者在法律上都安全。

企业合作伙伴关系也将从电动创新中受益。例如，博世与MAGURA合作开发了首款可投入生产的BOSCH电动自行车ABS。即使在困难的条件下，它也可确保受控的制动，并降低了前轮锁死或由于意外的制动操作而摔车的风险。

#CUSTOMIZEYOURBRAKE

NO MORE COMPROMISES

个性化配置：打造属于你的刹车

CUSTOMIZE YOUR BRAKE

What distinguishes an outstanding brake? We believe that it's individualization. Only when the brake is perfectly matched to the needs of the rider can it deliver its full power & performance. MAGURA offers a wide range of options for adapting each MT series MAGURA brake to individual requirements, in terms of performance, ergonomics and design.

MAGURA presents all of these components in the new Buyers Guide, making it easier to choose the right brake, the matching rotors & brake pads and the right lever blade and design elements. Here the focus is on the three major areas – performance, ergonomics and design. To get maximum performance from your brake, it must be adapted to your individual needs. The best example of this is DH world champion Loïc Bruni. After using the MAGURA MT7 he was more than happy with the performance, but for one thing: he wasn't 100 % convinced by the ergonomics of the lever blade design of the 1-finger HC and 2-finger lever blades – so MAGURA engineers developed the HC LOIC BRUNI lever blade, individually-adapted just for him.

MAGURA is convinced that not only professional sportsmen and women, but also everyday riders and hobby sports enthusiasts can benefit from an ergonomically- optimized cockpit. In cooperation with the ergonomics specialists SQLab, an Ergonomics Guide was developed for this purpose. In just 3 simple steps, it leads to the optimal, ergonomic adjustment of the brake on the handlebar.

However, design also plays an important role – and MAGURA now offers everyone the option to individually adjust their brakes. The range of products for individualization consists of colored clamps & rings, plus a new and unique design configurator for brake master covers. The configurator means that each rider can design his or her own covers, which are integrated as standard in all Carbotecture SL brake masters – and the options on offer will meet every rider's taste.

Performance, ergonomics & design – that's what distinguishes a MAGURA brake!

心光闪耀：点亮你的个性化煞车

出彩的刹车与众不同的是什么？我们相信一定是个性化。唯有充分满足骑行者的需求，刹车才会充分彰显它的制动力和性能。从性能、人体工程学和设计理念角度讲，玛古拉提供了广泛的产品选择范围，满足玛古拉刹车所有MT系列个性需求。

玛古拉将所有产品信息展示在用户指南，给用户在选择刹车及配件碟盘、来令片拉柄方面带来极大便利。重点关注性能、人体工程学理念和设计理念三个方面让你的刹车凸显优势，专属你的个性需求。速降的世界冠军Loïc Bruni就是最好的例子。通过使用MAGURA的MT7后，他对产品表现出来的性能非常开心，但是他希望有更专属个人化的设计，因此，玛古拉工程师为其个人设计出了HC LOIC BRUNI拉柄。

玛古拉坚信个性化配置不仅适合专业运动的男士与女士，也适合每一个骑行者、运动热情爱好者，大家都可以从人体工程学的设计中获益。通过与工效学领域的SQL合作，人体工程学指南应运而生。仅仅通过三个步骤，便可实现最理想的、符合人体工程学刹把。

此外，独特设计也是重要的角色。玛古拉提供各种可个性化的配件来装备刹车。个性化产品涉及到彩色束环、卡钳环以及新颖、独一无二的主盖配置。配饰是指每一个骑行者可设计迎合他或她自己品味的饰片，可适用于所有超轻碳纤维复合材质的刹车本体。

高性能、人体工程学理念和设计就是玛古拉刹车的出彩之处。



Find your individual brake setup and create your own design for your brake cover!

发掘属于你的刹车配置、设计你自己的刹车饰片

WWW.MAGURA.COM/CUSTOMIZE



1 BRAKE - 648 OPTIONS



Photos: MAGURA



MCI - THE NEW MAGURA COCKPIT INTEGRATION MAGURA集成式操控组件系统



Handlebar integration MCI

Internal hydraulics and optimal protection against damage – the new MAGURA Cockpit Integration (MCI) is the world's first hydraulic brake that's fully integrated into the handlebar.

The heart of the MAGURA MCI is a pull cylinder, which is invisibly located within the handlebar grip area. The tubings are also inside the handlebar, fed through the stem unit and frame to the brake calipers.

The MCI system is actuated by a lever unit attached to the handlebar – the only visible component of the new brake. The system is suitable for many riding styles and terrains, depending on the installed handlebar and stem unit.

The MCI is available with 2- and 4-pistons calipers. The dimensions of the reservoir and the piston diameter of the MCI correspond to the dimensions used in the MAGURA MT series, giving the MCI the same stability and braking force as conventional MAGURA MT brakes – and the weight remains the same. Also the MCI has its lever pivot point closer to the handlebar, giving riders an even more direct and progressive feel when braking. Lever reach adjustment is also infinitely variable, with a Torx T25 on the lever blade.

The fact that the fully-integrated MAGURA MCI remains a maintenance and user friendly system was of great concern to the MAGURA engineers right from the start: They developed the new Easy Link coupling. It's a special plug-in connector that links the cockpit unit and the tubing, so the MCI can be assembled in just a few simple steps without subsequent bleeding during servicing.

Only two clamp screws have to be removed to disassemble the visible lever unit from the internal hydraulic unit.

Brake bleeding is carried out by means of the proven MAGURA Easy Bleed Technology and a bleed screw at the end of the handlebar. For sure the existing MAGURA Service Kit can be used for this purpose.

玛古拉集成车把 MCI

内部液压装置和最佳防护 – 新的 MAGURA 集成式操控系统 (MCI) 是世界上第一个完全集成隐藏到把手内的液压刹车, MAGURA MCI 的核心部件是位于车把内部的集成油缸、线管及油路液压系统藏于车把内。外部手柄通过拉杆控制内置油缸, 油管穿过把立和车架连接卡钳。MCI 系统由刹车拉杆驱动锁附在车把上的拉杆, 是这款新刹车唯一可见的组件。该系统根据所安装的车把和把立可适用于多种骑行风格和地形。MCI 提供 2 活塞和 4 活塞卡钳。MCI 系统使用和 MAGURA MT 系列同样的活塞尺寸, 使得 MCI 具有与传统 MAGURA MT 制动器相同的稳定性和制动力, 并且重量保持不变。此外, MCI 刹把转点更接近车把, 给骑手更直接、更渐进的制动感觉。通过刹把上的 Torx T25 可以进行握距调整。

事实上玛古拉工程师从一开始设计这套完全集成的 MAGURA MCI 系统, 就非常关心使用和维护上的方便: 工程师开发了新的油管连接器, 称之为 Easy link。这是一个特殊的连接器, 连接驾驶舱和管道, 因此 MCI 可以用几个简单的步骤组装, 维修过程中不会出现漏油。

只需拆下两个夹紧螺钉就可以从内部液压组件拆下刹把。

刹车注油是通过久经考验的 MAGURA 易注油技术和车把末端的注油螺丝实现。现有的 MAGURA 修补套件可适用。



MAGURA ORIGINAL SPARE PARTS 玛古拉原装配件

Service and quality – MAGURA Original Spare Parts mean not only swabian quality you can rely on, but also excellent service: All products are repaired in one of the four European MAGURA service centres as well as at our subsidiaries in the US and Asia. Who else is able to repair important components such as brakes and suspension forks and to restore them to top condition better than our in-house experts?

MAGURA Original Spare Parts are always available, so you can rely on the brakes even after years of use. Our spare and wear parts guarantee maximum performance and safety. The range includes rotors in all common sizes, and brake pads for every use from comfort and performance to racing. Replacing worn MT series brake pads is oh-so-easy thanks to the MAGURA magnetiXchange system.

MAGURA's choice of materials is also oriented on reliability – and this is why all hydraulic braking systems from MAGURA use mineral oil – the renowned MAGURA Royal Blood. Its biggest advantage? Royal Blood does not age or draw water, and in contrast to DOT brake fluids, it doesn't have to be periodically bled off and refilled. Royal Blood also does not damage paintwork or materials.

服务和品质 – MAGURA 原装配件不仅意味着品质可以信赖，还有优质的服务：所有产品都可以在MAGURA欧洲四大服务中心以及美国和亚洲的子公司进行维修。MAGURA的专业人士更能维修刹车和前叉里的重要零件，并将它们恢复到最佳状态。

MAGURA原装配件长期供应，因此您可以信赖我们的刹车，即使使用多年。我们的配件和磨损部件保证最高的性能和安全性。配件范围包括所有常见尺寸的碟片，以及各种情况下使用的来令片。有舒适型、功能型和竞赛型。更换磨损的MT系列来令片非常容易更换，得益于MAGURA磁式更换系统。

MAGURA的材料选择也以可靠性为导向，这就是为什么MAGURA所有的液压制动系统都使用矿物油 – 著名的MAGURA皇家矿物油。其最大的优势是：皇家矿物油不老化不吸水，相对于DOT制动油，它不必定期维护和重新注油。皇家矿物油也不会损坏油漆或原材料。

BEST PARTS = BEST BRAKING PERFORMANCE 最好的零件= 最好的刹车功效

MAXIMUM BRAKING POWER

You'll get maximum braking power using original MAGURA rotors and brake pads – because our components are optimally matched to each other in terms of material and technology.

CONSISTENT QUALITY

All MAGURA Original Spare Parts are subject to constant quality controls and ensuring consistently high quality.

5 YEARS GUARANTEE

MAGURA offers a five-year leak proof guarantee for all MAGURA brake masters and brake calipers / cylinders, provided they are exclusively equipped with original MAGURA Spare Parts.

最大制动力

使用原装MAGURA碟片和来令片您将获得最大的制动力-因为我们的零件在材料和技术上是相匹配设计的

一致的品质

所有MAGURA原装配件均在稳定的品质控制下和确保始终如一的高品质。

5年保固

MAGURA提供五年防漏油保固。MAGURA为所有MAGURA刹车本体和制动卡钳提供为期五年的防漏保证，前提是它们配备原装MAGURA配件，更多信息请见第74页。



Photo: Thomas Weschta

MAGURA TECHNOLOGY

玛古拉材料技术

MAGURA technology – materials

MAGURA stands for the highest reliability and quality in both the motorcycle and bicycle industries. Many of the MAGURA components are “Made in Germany”, produced not far from the headquarters in Bad Urach in two factories on the Swabian Alb. These components include the brake masters made of our own developed materials Carbotecture SL® and Carbotecture®. Carbotecture SL® consists of a carbon fibre-reinforced, high-tech polymer, a material that is extremely impact and tear resistant and has a high degree of elasticity, making it extremely robust. Carbotecture® has similar properties, but fibreglass fibres are used instead of carbon fibres.

Very light but extremely resistant components can be produced thanks to our high-tech plastics Carbotecture SL®, Carbotecture® and the Carbolay manufacturing process, all developed in-house by MAGURA. The fact that these materials have been created for the highest demands is demonstrated not least by their use for brake and clutch valves on motorcycles.

独一无二：MAGURA全球独家科技—
无人能取代的顶级材料

玛古拉是摩托车及自行车产业可靠及高品质的代表。大部分的玛古拉产品都是德国生产。两座工厂位于总部Bad Urach不远处。玛古拉刹车本体是由自主研发的由碳纤维粒子组成的材料Carbotecture和Carbotecture SL制成，Carbotecture SL是由碳纤维组成的高科技聚合物，具有极高的抗冲击性，拉伸强度及屈服强度。Carbotecture性能相似，只是用玻璃纤维代替碳纤维。

生产出轻量化且耐用的产品得益于MAGURA高科技材料Carbotecture和Carbotecture SL技术以及内部高度发达的制造工艺。在摩托车刹车及离合器上的成功应用，证实两种材料符合于高质量要求。



CUTTING-EDGE MATERIALS

CARBOTECTURE®

- Synthetic granules made of high-tech polymers and short carbon or glass fibres
- Any desired shape can be achieved thanks to the Carboflow process
- Complex shapes with smooth surfaces can be created
- 50 % lighter than aluminium, with identical tensile and breaking strength

CARBOTECTURE SL®

- An enhanced development of Carbotecture®
- Integration of medium-length carbon fibres
- Additional weight reduction with a level of resistance that has been increased yet again

CARBOLAY® PROCESS

- Load-appropriate positioning of carbon fibres using a textile process
- Fully-automatic production without the usual manual work associated with carbon
- High rigidity of the components combined with low weight

3D METAL PRINTING PROCESS

- Cost efficient production with small batches
- Rapid prototyping: accelerated development through rapid prototype production
- Less weight, but with the same strength and stiffness achieved with die casting

独家纤维复合材质

- 由高科技聚合物制成的合成颗粒，加入了短碳或玻璃纤维
- 任何所需的形状都可以实现，这要归功于碳纤流工艺。
- 能达到光滑表面的复杂形状
- 比铝轻 50%，与铝相同拉伸和断裂强度

高科技碳纤维复合材质

- 增强的Carbotecture
- 中长碳纤维的集成
- 减轻重量

CARBOLAY® 工艺流程

- 碳纤维的叠层定位使用纺织工艺
- 全自动生产，无需与碳相关的体力劳动
- 组合的部件强度高重量轻

3D 金属打印流程

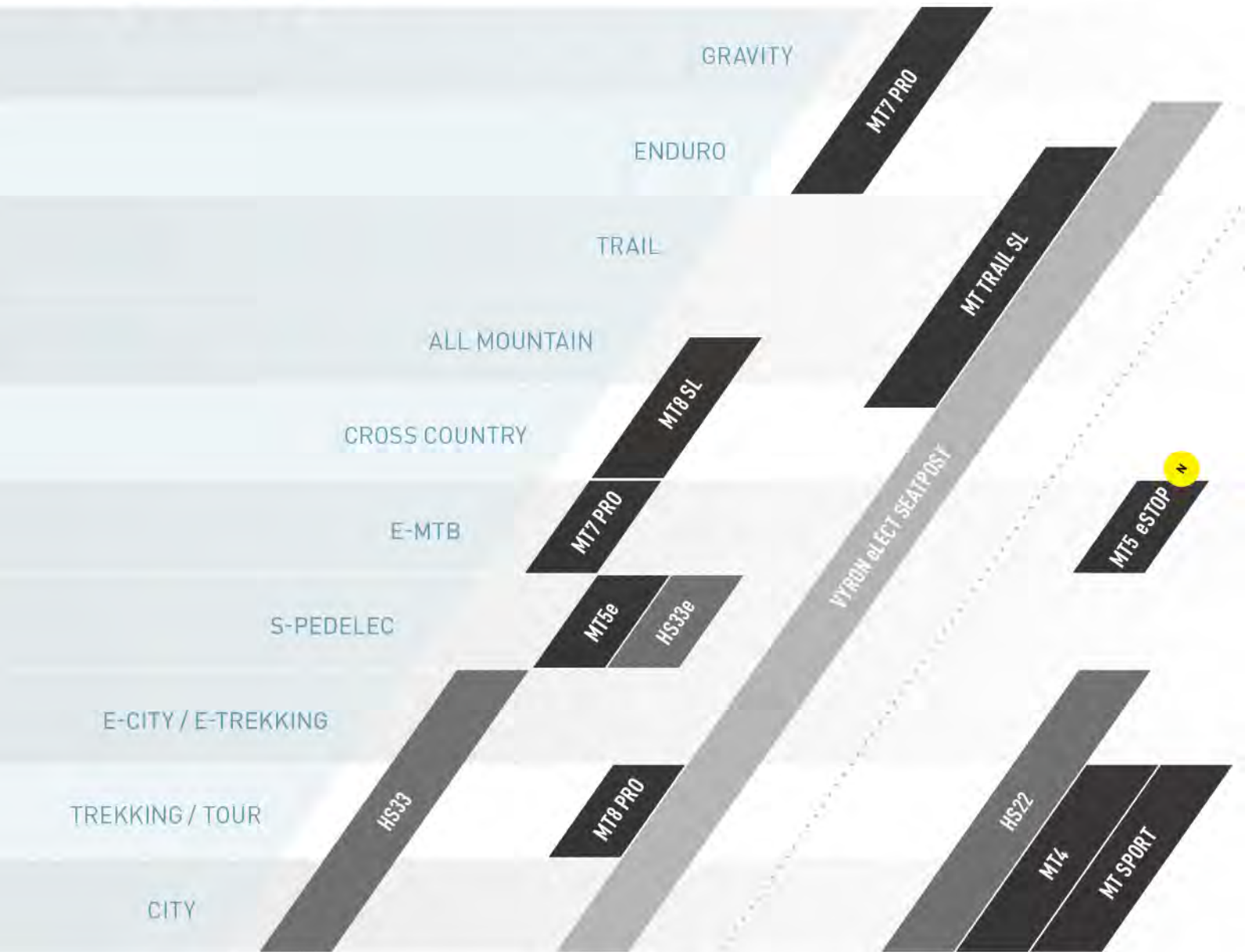
- 小批量经济高效生产
- 快速原型设计：通过快速原型生产加快开发
- 比压铸重量轻，但强度和硬度相同

PRODUCT OVERVIEW

2020

产品总览

PRO



MAGURA Product Overview 2020

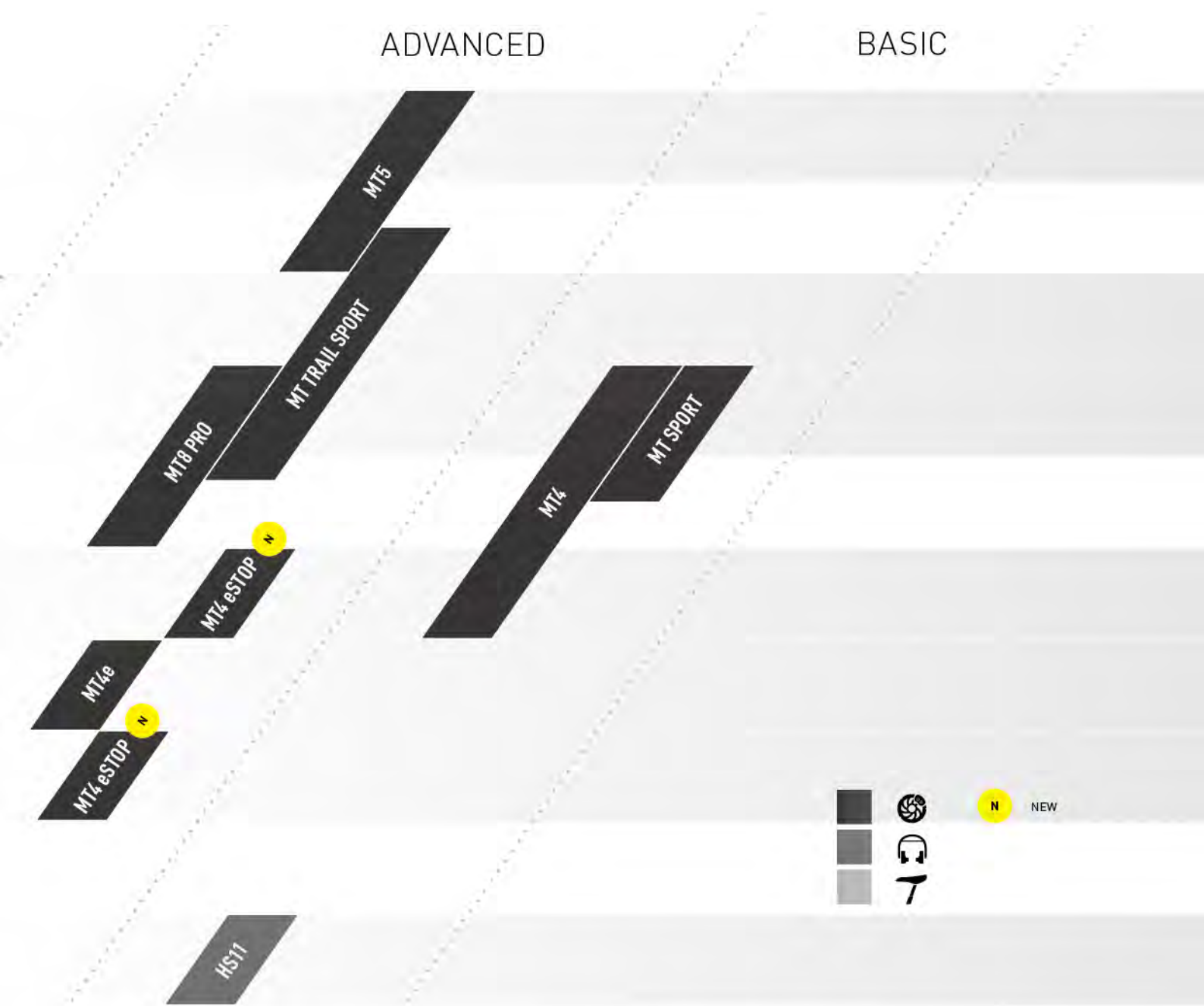
MAGURA offers the ideal components for every bike and every riding style, whether it's disc brakes, rim brakes or dropper seatposts. The company has a comprehensive and constantly-growing product portfolio covering riding safety, comfort and innovative e-solutions.

The graphic will help you select the right product. Graded by usage (horizontal) and requirement (vertical) providing a simple overview of the entire product range.

Explanation of product designations:

SL = 1-finger HC Carbon lever blade; PRO = 1-finger HC Aluminium lever blade

The new Buyers Guide for interactive buying advice is available online at www.magura.com/customize. The new MT eSTOP brakes deserve special attention. They are equipped with the new e-bike-optimized SPORT brake pads – and in combination with the new MDR-C or MDR-P rotors, they are the optimal product to meet the demands placed on e-bike brakes.



玛古拉2020产品总览

玛古拉为每辆自行车及每种骑行风格提供理想的零配件，无论是碟刹、轮圈刹还是液压座杆。拥有全面、不断增长的产品组合，涵盖骑行安全、舒适性和创新电子解决方案。

该图形将帮助您选择正确的产品。按照使用(水平)和要求(垂直)分级，提供一个简单完整产品系列的概述。

提供新的购买建议的购买指南已经在线：www.magura.com/cus-tomize。

新的MT eSTOP刹车值得特别注意。配备了新的电动自行车优化运动型来令片，和组合式的MDR-C或MDR-P碟片，是满足电动自行车刹车要求的最佳选择。

产品名称说明：

SL = 1指HC碳拉柄；PRO = 1指HC铝制拉柄





DISC / BRAKES

DISC BRAKES 碟刹

MT TECHNOLOGY

MT 技术



1 EASY BLEED TECHNOLOGY

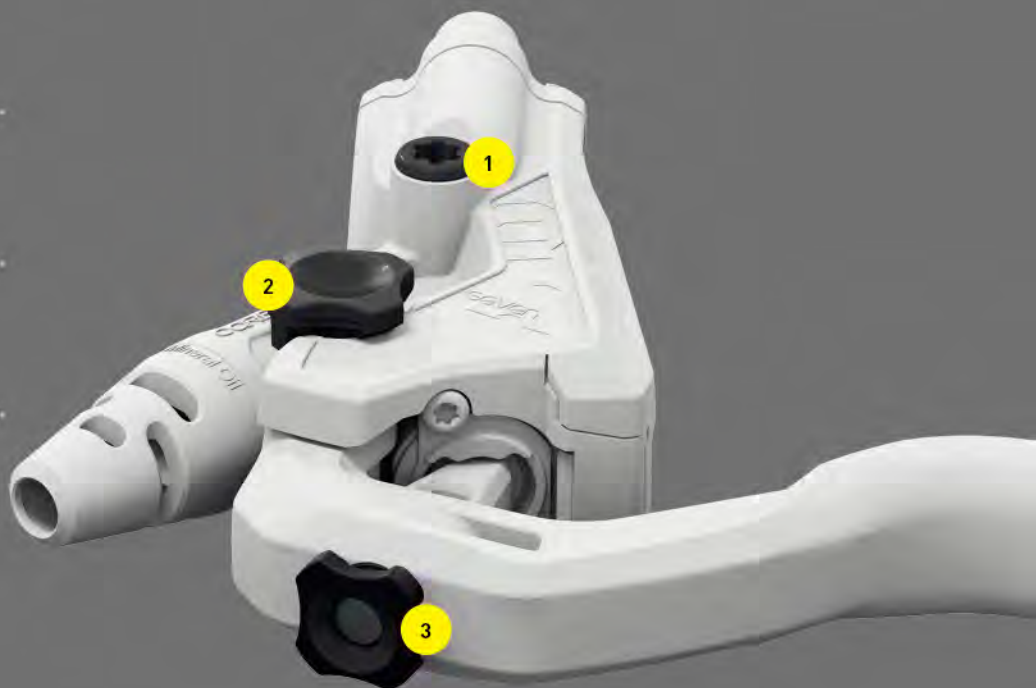
易注油技术
Quick and easy bleeding
注油作业快速简单。

2 BITE ADJUST TECHNOLOGY

刹车灵敏度微调技术
Toolless bite adjust
免工具进行灵敏度微调

3 TOOLLESS REACH ADJUSTMENT

免工具握距调整技术
Toolless reach adjust
免工具进行握距调整



4 BANJO FITTING

可调式油管
Rotatable tubing routing
可配合车架调整油管出线角度

5 MAGNETIXCHANGE

磁吸式卡钳活塞
Easy brake pad replacement
大幅简化来令片更换作业。

6 TRIPLE ARCH DESIGN

三拱桥设计
Ultimate caliper rigidity
提供卡钳绝佳刚性

 **DESIGNED AND ENGINEERED IN GERMANY**
德国设计和研发

5 YEARS LEAK PROOF GUARANTEE
5年防漏油保固

 **FILLED WITH ROYAL BLOOD**
使用皇家血统矿物油

MT7 PRO

The clearly defined bite point and maximum power make it the first choice for gravity and high-speed pilots. The 1-finger HC lever blade modulates the enormous braking power as desired.

精准的刹车动作及强大的制动力道，使MT7成为您征服瞬间急转及陡峭下坡的最佳利器。全新开发的HC单指式拉柄，让您随心所欲地操控完美制动力道。

Weight 重量	255 g
Master 本体	Carbotecture SL® 高科技碳纤维复合材质
Lever blade 拉柄	1-Finger HC, Hollow Aluminium HC 1指式铝合金中空拉柄
Reach adjust 握距调整：免工具	toolless 免工具
Bite adjust 灵敏度调整：免工具	toolless 免工具
Pistons 活塞数量	4
RRP 建议售价	219,90 €* 219,90 €*
Order No. 产品编号	2 701 445



E-BIKE READY

AWARD-WINNING BRAKING PERFORMANCE
荣获最佳测试产品奖

ADAPTABLE ERGONOMICS 符合人体工学

WEIGHT RATIO PERFORMANCE 最佳重量性能比



MT5

Full gravity braking power of the 4 pistons as an affordable entry level. Our MT5 downhill and enduro model has all the genes of the MT7. Reliable and strong - also for e-bikes.

4活塞刹车的经济入门款，拥有MT7重型速降基因特质。稳定且强大的制动力道，同样适用于电动车系列。

Weight 重量	255 g*
Master 本体	Carbotecture® 独家碳纤维复合材质
Lever blade 拉柄	2-Finger, Aluminium 2指式铝合金拉柄
Reach adjust 握距调整	T25 tool T25 星型起子
Bite adjust 灵敏度调整	-
Pistons 活塞数量	4
RRP 建议售价	109,90 €* 109,90 €*
Order No. 产品编号	2 700 477



E-BIKE READY

GENES OF THE MT7 承传MT7精髓

ENTRY-LEVEL 4 PISTONS BRAKING POWER
入门款4活塞刹车

HIGH-QUALITY MATERIALS 高品质材料打造



All prices including 19% VAT. 所有价格包括19% 增值税。

* 800 mm brake tubing length without rotor/adaptor * 搭配800毫米油管，不含碟片及转接座。

DISC BRAKES

MT TRAIL SL

MAGURA's definition of trail braking performance – 4 pistons in the front for maximum braking power, 2 pistons in the rear for perfect modulation. Thanks to the 1-finger HC Carbon lever blade it just weigh around about 230 g (average value).
MAGURA对林道制动性能的定义，前轮用4活塞，可实现最大制动力，后轮用2活塞，获得完美的操控性。受益于单指HC碳拉柄，重量约230克（平均值）。

Weight (F/R) 重量	240 g / 220 g (前/后)
Master 本体	Carbotecture SL® 高科技碳纤维复合材质
Lever blade 拉柄	1-Finger HC, Carbon HC 1指式碳拉柄
Reach adjust 握距调整	3 mm allen key 3毫米内六角扳手
Bite adjust 灵敏度调整	-
Pistons 活塞数量	4/2
RRP 建议售价	579,90 € (Set)* (组)
Order No. 产品编号	2 701 646



E-BIKE READY

100% TRAIL PERFORMANCE 100%满足林道的性能

LIGHTWEIGHT 超轻量化

1-FINGER HC CARBON LEVER BLADE 1指式碳拉柄

MT TRAIL SPORT

100% trail performance at an attractive price. Almost as snappy and light as its big sister – and just as sensitive too. This is the new MAGURA entry into the 4/2 brake piston concept.

100%林道性能，价格美好。拥有和MT TRAIL SL相似的轻快灵敏。是玛古拉前四后二活塞新概念的入门型号。

Weight (F/R) 重量	255 g / 230 g (前/后)
Master 本体	Carbotecture® 独家碳纤维复合材质
Lever blade 拉柄	1-Finger HC, Hollow Aluminium HC 1指式碳拉柄
Reach adjust 握距调整	3 mm allen key 3毫米内六角扳手
Bite adjust 灵敏度调整	-
Pistons 活塞数量	4/2
RRP 建议售价	219,90 € (Set)* (组)
Order No. 产品编号	2 701 389



E-BIKE READY

GENES OF THE MT TRAIL SL

传承MT TRAIL SL

1-FINGER HC LEVER BLADE 1指 HC 拉柄

ENTRY-LEVEL TRAIL BRAKING POWER 入门级别林道刹车力量

All prices including 19% VAT. 所有价格包括19% 增值税。

* 800 mm brake tubing length without rotor/adaptor 搭配800毫米油管，不含碟片及转接座。



DISC BRAKES

碟刹

MT8 SL

Perfect for cross country and marathon races: super light due to the Carbotecture SL® housing and with high braking power thanks to the ergonomic 1-finger HC Carbon lever blade. All reasons professional races trust in this brake.

越野和马拉松的完美表现：超级轻量化得益于高科技碳纤维复合材料本体，精准的刹车力道得益于符合人体工学的1指HC碳拉柄。深得专业选手的信赖。

Weight 重量	195 g
Master 本体	Carbotecture SL® 高科技碳纤维复合材质
Lever blade 拉柄	1-Finger HC, Carbon HC 1指式碳拉柄
Reach adjust 握距调整	3 mm allen key 3毫米内六角扳手
Bite adjust 灵敏度调整	-
Pistons 活塞数量	2
RRP 建议售价	279,90 €*
Order No. 产品编号	2 701 657



E-BIKE READY

ENGINEERED FOR RACING 为竞赛而生

1-FINGER HC CARBON LEVER BLADE 1指HC碳拉柄

LIGHTWEIGHT PERFORMANCE 高性能轻量化刹车



MT8 PRO

The MT8 Pro offers the same performance as the high-end MT8 SL model at an attractive price. Equipped with a 1-finger HC aluminium lever blade it provides reliability on tours and in competition.

MT8 Pro 提供与高端产品MT8 SL相同的性能，更具吸引力的价格。配备1指HC铝合金中空拉柄，骑游和竞赛中提供可靠性能。

Weight 重量	225 g
Master 本体	Carbotecture SL® 高科技碳纤维复合材质
Lever blade 拉柄	1-Finger HC, Hollow Aluminium HC 1指式铝合金拉柄
Reach adjust 握距调整	toolless 免工具
Bite adjust 灵敏度调整	-
Pistons 活塞数量	2
RRP 建议售价	179,90 €*
Order No., 产品编号	2 701 728



E-BIKE READY

GENES OF THE MT8 SL 传承MT8 SL

ELEGANT CHROME POLISHED FINISH
优雅的镀铬抛光表面

LIGHTWEIGHT TECHNOLOGY 轻量化技术

MT4

The perfect all-rounder for mountain bikers who value stability and braking power, without having to compromise on weight. The Carbotecture® master keeps the entire weight to 230 grams.

山地车手梦寐以求的全能产品，拥有稳定可靠的刹车力道及绝不妥协的轻量化特征。独家碳纤维复合材质本体保持整套刹车系统的重量为230克。

Weight 重量	230 g
Master 本体	Carbotecture® 独家碳纤维复合材质
Lever blade 拉柄	2-Finger, Aluminium 2指式铝合金拉柄
Reach adjust 握距调整	T25 tool T25 星型起子
Bite adjust 灵敏度调整	-
Pistons 活塞数量	2
RRP 建议售价	89,90 €*
Order No. 产品编号	2 700 476



E-BIKE READY

PERFECT ALL-ROUNDER 完美演绎全能风采

VERY GOOD PRICE/PERFORMANCE RATIO 最佳性价比

INNOVATIVE TECHNOLOGY 创新科技

MT SPORT

The entry level to the MAGURA MT world. With all of the high-tech features of German engineering skill, such as lightweight Carbotecture® components and the improved MAGURA disc tube for safe stopping on tour and in the city.

玛古拉MT刹车系统中的超值入门款。展现所有德国工程技能和高科技特点，如超轻的CARBOTECTURE及改进的玛古拉油管，提供更精准及安全的刹车力道。

Weight 重量	245 g
Master 本体	Carbotecture® 独家碳纤维复合材质
Lever blade 拉柄	2-Finger, Carbotecture® 2指式高科技碳纤维复合材质拉柄
Reach adjust 握距调整	T25 tool T25 星型起子
Bite adjust 灵敏度调整	-
Pistons 活塞数量	2
RRP 建议售价	59,90 €*
Order No. 产品编号	2 701 705



E-BIKE READY

JOIN THE MAGURA MT FAMILY 玛古拉家族入门款

FULL CARBOTECTURE® MASTER 全高科技碳纤维复合材料刹把

VERY GOOD PRICE/WEIGHT RATIO 超轻高性价比

All prices including 19% VAT. 所有价格包括19% 增值税。

* 800 mm brake tubing length without rotor/adaptor 搭配800毫米油管，不含碟片及转接座。

DISC BRAKES FLATMOUNT TECHNOLOGY 碟刹平装式技术



1 MAGNETIXCHANGE

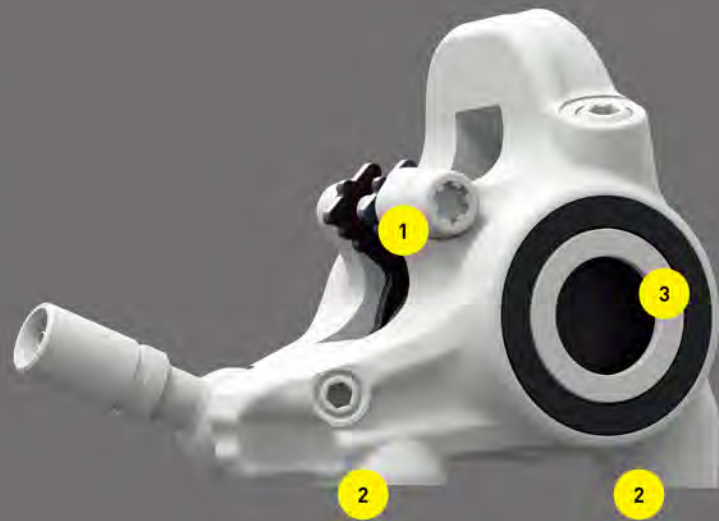
磁吸式来令片更换技术
Easy brake pad replacement
易取换来令片

2 FLATMOUNT MOUNTING

平装式安装
Caliper with threads (M5), easy mounting
M5螺孔位于卡钳上，易安装

3 STANDARD 2 PISTONS MT BRAKE PADS

标准二活塞来令片
High braking performance and stability
优越可靠的刹车性能




Flatmount brakes

The flatmount brake is characterized by integrated threads in the caliper, which are fastened with M5 screws. The compact design and integrated threads simplify the mounting on the chain stay. Due to the same brake pad and pistons size of the standard 2 pistons MT brake, the flatmount brake is just as strong as the postmount variant.

平装式刹车

平装制动器的特点是集成卡钳中的螺纹，用M5螺钉固定。紧凑的设计和集成的螺纹，简化安装过程。由于使用与标准MT的2活塞刹车相同的来令片和活塞尺寸，平装式刹车与柱式安装的刹车制动力一样强。

 **DESIGNED AND
ENGINEERED IN GERMANY**
德国设计和研发

**5 YEARS LEAK
PROOF GUARANTEE**
5年防漏油保固

 **FILLED WITH
ROYAL BLOOD**
使用皇家血统矿物油

MT8 SL FLATMOUNT

With the MT8 SL FM, ambitious cross-country racers can brake right when they want to – at the last moment. The MT8 SL FM accommodates brake discs up to 160 mm, making it just as powerful and wear-resistant as the MT8 SL, on which it is based.

有了MT8 SL FM，雄心勃勃的越野赛车手制动时可以随心所欲。MT8 SL FM 最高可使用 160 mm 的碟片，使它和 MT8 SL 的制动力及耐磨性接近。

Weight 重量	185 g
Master 本体	Carbotecture SL® 高科技碳纤维复合材质
Lever blade 拉柄	1-Finger HC, Carbon 1指式HC 碳拉柄
Reach adjust 握距调整	3 mm allen key 3毫米内六角扳手
Bite adjust 灵敏度调整	-
Pistons 活塞数量	2
RRP 建议售价	279,90 €* 279.90 欧元
Order No. 产品编号	2 701 632



E-BIKE READY

LOW-WEAR 低磨损

INTEGRATED DESIGN 集成设计

SUITABLE FOR RACING 竞赛适用

MT4 FLATMOUNT

Elegant and slim, but with a powerful bite. Although it has a more compact design, the MT4 FM takes our standard brake pads, so it is just as powerful and heat resistant as our "large" models.

优雅和苗条，但是强大有力。MT4 FM 采用标准来令片，设计更加紧凑，所以它像是一个全功率和耐热的“大”模型。

Weight 重量	220 g
Master 本体	Carbotecture® 独家碳纤维复合材质
Lever blade 拉柄	2-Finger, Aluminium 2指式铝合金拉柄
Reach adjust 握距调整	T25 tool T25 星型起子
Bite adjust 灵敏度调整	-
Pistons 活塞数量	2
RRP 建议售价	129,90 €* 129.90 欧元
Order No. 产品编号	2 701 633



E-BIKE READY

COMPACT DESIGN 紧凑设计

TORSION-RESISTANT 抗扭曲性

STANDARD BRAKE PADS 标准来令片

DISC BRAKES 碟刹

E-BIKE OPTIMIZED TECHNOLOGY

电动车优化技术



MT eSTOP BRAKES

Because the components used to make the new MT eSTOP brake system are perfectly matched to each other they can offer the maximum performance needed for an e-bike due to the higher mass and speeds.

The system consists of 3 components – for best performance and security!

MT eSTOP 电动车刹车

MT eSTOP 电动车刹车系统的各零件之间完美的配合以发挥最佳的刹车性能，以适应电动车的更高品质和速度。

该系统由 3 个组件组成，以获得最佳刹车性能和安全性。

1 MT eSTOP BRAKES

MT eSTOP 刹车

Have all the features of our proven MT series

拥有所有 MT 系列刹车的特点

Available as 2- or 4-pistons version

适用 2 或 4 活塞刹车。

2 MDR-C AND MDR-P ROTORS

MDR-C 和 MDR-P 碟片

Better heat resistance and greater stability

更好的耐热性及稳定性

MDR-P available up to 220 mm

MDR-P 最大可使用 220 毫米直径的碟片

3 SPORT BRAKE PADS

SPORT 来令片

New brake pad compound with shorter bed-in time

新的聚合物来令片

Longer durability

更短的磨合时间，更长的寿命



3 PARTS — ONE PERFECT SYSTEM

DISC BRAKES 碟刹电动车刹车选项

E-BIKE OPTIMIZED BRAKES

MT5 eSTOP

This is MAGURA's top model for more demanding e-bike use. With its powerful 4-pistons calipers, the MT5 eSTOP offers safe performance at high speeds, even on heavy e-bikes.

这是MAGURA用在要求更苛刻的电动自行车的顶级型号。凭借其强大的4活塞卡钳，MT5 eSTOP在高速下提供安全性能，即使用在重型电动自行车。

Weight 重量	255 g
Master 本体	Carbotecture® 独家碳纤维复合材质
Lever blade 拉柄	2-Finger, Aluminium 2指式铝合金拉柄
Reach adjust 握距调整	T25 tool T25 星型起子
Bite adjust 灵敏度调整	-
Pistons 活塞数量	4
RRP 建议售价	114,90 €
Order No. 产品编号	2 701 999
Recommended rotor 推荐碟片	MDR-P



NEW

FLAGSHIP FOR E-BIKES 电动自行车首选
HIGH STABILITY & POWER 高稳定性和功率
LONGER DURABILITY 更长的耐用性

MT4 eSTOP

Optimized for the requirements of modern e-bikes. Controlled power for off-road and city tours. Particularly reliable thanks to optimized components.

针对现代电动自行车的要求进行了优化。适用轻度越野和城市旅游车。优异的可靠性得益于优化的组件。

Weight 重量	230 g
Master 本体	Carbotecture® 独家碳纤维复合材质
Lever blade 拉柄	2-Finger, Aluminium 2指式铝合金拉柄
Reach adjust 握距调整	T25 tool T25 星型起子
Bite adjust 灵敏度调整	-
Pistons 活塞数量	2
RRP 建议售价	94,90 €
Order No. 产品编号	2 702 000
Recommended rotor 推荐碟片	MDR-C



NEW

PERFECT E-BIKE ALLROUNDER 完美的电动自行车刹车表现
LONGER DURABILITY 更长的耐用性
HIGH QUALITY MATERIALS 高品质材料

All prices including 19% VAT. 所有价格包括19% 增值税。

* 800 mm brake tubing length without rotor/adaptor 搭配800毫米油管，不含碟片及转接座。

DISC BRAKES E-BIKE OPTIMIZED KIT 碟刹电动车优化套件

NEW



MT eSTOP OPTIMIZED KIT FOR E-MTB

MT eSTOP 优化套件，适用电动山地车

	Order Number 貨品編號	RRP 建議售價
MT eSTOP Optimized Kit 203/P - 8.S: Rotor MDR-P, Ø 203 mm, 6 hole and brake pads 8.S, SPORT (PU = 1 pair) MT eSTOP 优化套件 203/P = 8.S: 碟片 MDR-P, 直径 203 mm、6 孔和运动型来令片 8.S、(VE = 1 套)	2 702 028	69,50 €
MT eSTOP Optimized Kit 220/P - 8.S: Rotor MDR-P, Ø 220 mm, 6 hole and brake pads 8.S, SPORT (PU = 1 pair) MT eSTOP 优化套件 220/P = 8.S: 碟片 MDR-P, 直径 220 mm、6 孔和运动型来令片 8.S、(VE = 1 套)	2 702 029	69,50 €
MT eSTOP Optimized Kit 203/P - 7.S: Rotor MDR-P, Ø 203 mm, 6 hole and brake pads 7.S, SPORT (PU = 1 pair) MT eSTOP 优化套件 203/P = 7.S: 碟片 MDR-P, 直径 203 mm、6 孔和运动型来令片 7.S、(VE = 1 套)	2 702 030	66,50 €
MT eSTOP Optimized Kit 220/P - 7.S: Rotor MDR-P, Ø 220 mm, 6 hole and brake pads 7.S, SPORT (PU = 1 pair) MT eSTOP 优化套件 220/P = 7.S: 碟片 MDR-P, 直径 220 mm、6 孔和运动型来令片 7.S、(VE = 1 套)	2 702 031	66,50 €

MT eSTOP OPTIMIZED KIT FOR E-CITY / E-TREKKING

MT eSTOP 优化套件，适用电动城市车及电动旅行车

	Order Number 貨品編號	RRP 建議售價
MT eSTOP Optimized Kit 180/C - 8.S: Rotor MDR-C, Ø 180 mm, 6 hole and brake pads 8.S, SPORT (PU = 1 pair) MT eSTOP 优化套件 180/C = 8.S: 碟片 MDR-C, 直径 180 mm、6 孔和运动型来令片 8.S、(VE = 1 套)	2 70 2018	45,50 €
MT eSTOP Optimized Kit 203/C - 8.S: Rotor MDR-C, Ø 203 mm, 6 hole and brake pads 8.S, SPORT (PU = 1 pair) MT eSTOP 优化套件 203/C = 8.S: 碟片 MDR-C, 直径 203 mm、6 孔和运动型来令片 8.S、(VE = 1 套)	2 702 025	45,50 €
MT eSTOP Optimized Kit 180/C - 7.S: Rotor MDR-C, Ø 180 mm, 6 hole and brake pads 7.S, SPORT (PU = 1 pair) MT eSTOP 优化套件 180/C = 7.S: 碟片 MDR-C, 直径 180 mm、6 孔和运动型来令片 8.S、(VE = 1 套)	2 702 026	44,00 €
MT eSTOP Optimized Kit 203/C - 7.S: Rotor MDR-C, Ø 203 mm, 6 hole and brake pads 7.S, SPORT (PU = 1 pair) MT eSTOP 优化套件 203/C = 7.S: 碟片 MDR-C, 直径 203 mm、6 孔和运动型来令片 7.S、(VE = 1 套)	2 702 027	44,00 €







RIM / BRAKES

RIM BRAKES HS TECHNOLOGY

轮圈刹 HS 技术



1 BRAKE BOOSTER

刹车补强片

Brake booster for optimized bite point
避免刹车力道大于车架受力而产生的变形

2 EASY PAD REPLACEMENT

来令片易更换设计

Easy brake pad replacement
大幅简化来令片更换作业

3 HS EASY MOUNT

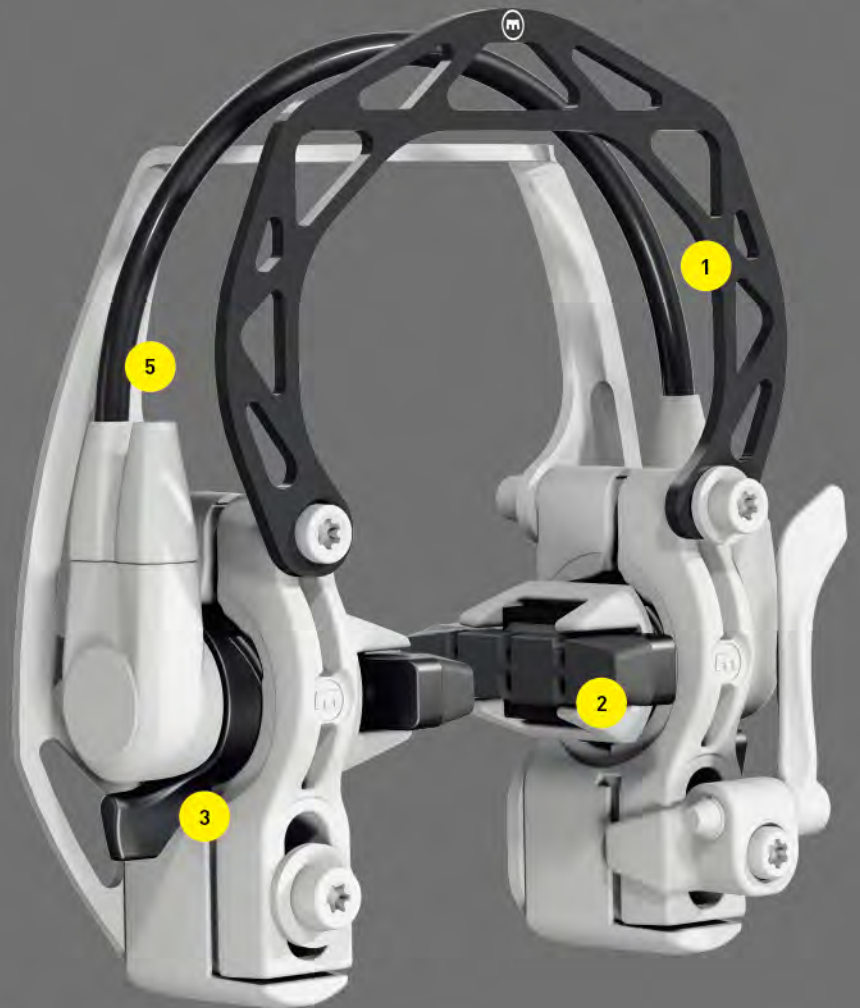
HS 简易安装

Easy mounting and adjustment
提供更简易的安装及调节步骤

4 EVO2

EVO2 固定座

Flexible adaptation to all systems
能更弹性的适应所有系统



5 MORE BRAKING POWER FOR E-BIKES

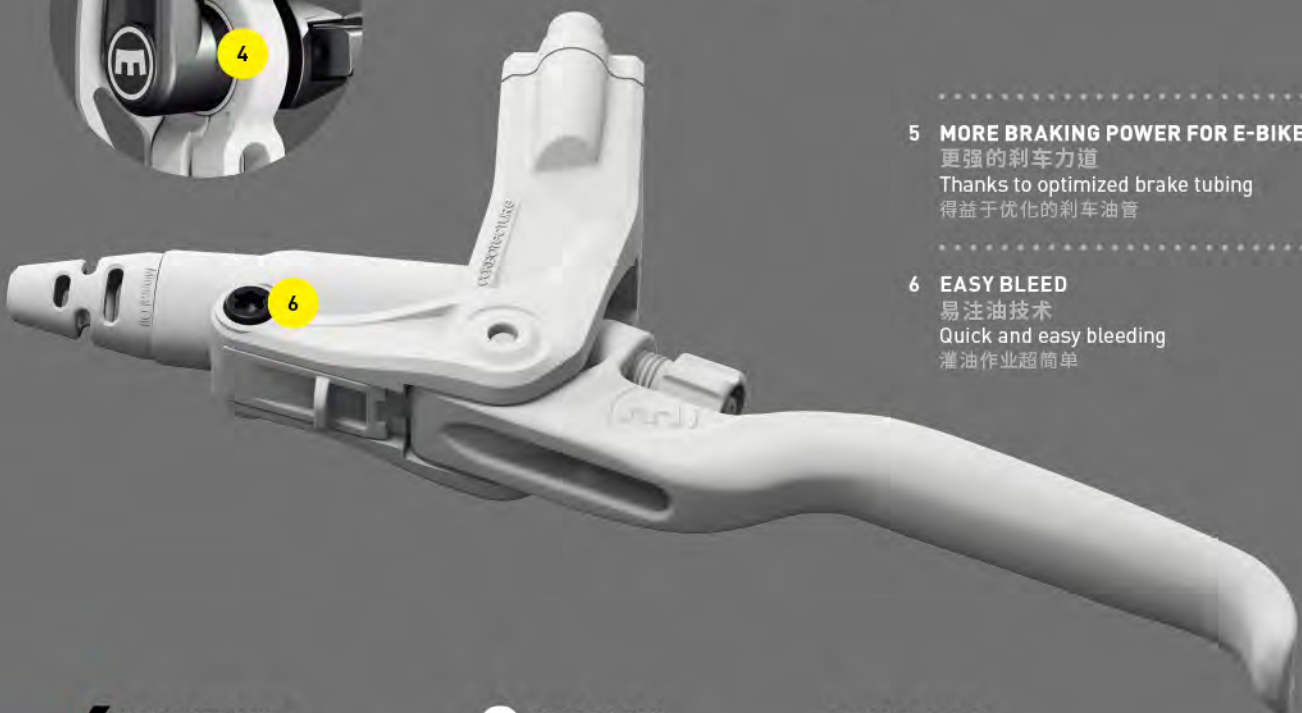
更强的刹车力道

Thanks to optimized brake tubing
得益于优化的刹车油管

6 EASY BLEED

易注油技术

Quick and easy bleeding
灌油作业超简单



 **DESIGNED AND
ENGINEERED IN GERMANY**
德国设计和研发

**5 YEARS LEAK
PROOF GUARANTEE**
5年防漏油保固

 **FILLED WITH
ROYAL BLOOD**
使用皇家血统矿物油

HS33

Our unbeatable classic. The MAGURA top model of the carefree family scores with sheer reliability and offers increased braking power and low weight.

经典不败款！玛古拉轮圈刹的最高阶款。超高评价来自稳定可靠的特性，轻量化的同时也提高刹车制动力。

Weight 重量	480 g
Master 本体	Carbotecture® 独家碳纤维复合材料
Lever blade 拉柄	2-Finger, Aluminium 2指式铝合金拉柄 opt.: 4-Finger, Aluminium 选配4指 铝合金拉柄
Reach adjust 握距调整	T25 tool T25 星型起子
Pad wear adjustment 刹车快间隙调整	TPA TPA 调整钮
Mounting 刹车固定座	Cantilever EVO2 EVO2固定座
RRP 建议售价	109,90 €
Order No. 产品编号	2 700 246*

More colors: 2 700 246: black, 2-Finger / 2 700 245: silver, 2-Finger / 2 700 247: black, 4-Finger

更多颜色：2 700 246：黑色，2指拉柄
2 700 245：银色，2指拉柄
2 700 247：黑色，4指拉柄



E-BIKE READY

SPORTY DESIGN 运动风设计

THE FLAGSHIP OF CAREFREE BRAKES 轮圈刹中的旗舰款

HUGE BRAKING POWER FOR RIM BRAKES 拥有最强劲的刹车力道



Photo: Philip Ruopp

All prices including 19% VAT. 所有价格包括19% 增值税。

RIM BRAKES

HS22

Fitted to many award-winning bicycles, because commuter and trekking riders value safety and maintenance-free features. The Royal Blood can remain in the brake tubing forever.

稳定可靠且几乎不需要保养的特性，深获喜爱单车通勤或旅行的车友青睐。如今已经能在多款获奖的车种上看见它的身影。以皇家矿物油作为传动媒介，封闭式系统让您完全不须费心保养。

Weight 重量	480 g
Master 本体	Carbotecture® 独家碳纤维复合材质
Lever blade 煞車拉柄	3-Finger, Carbotecture® 3指独家纤维复合材质拉柄
Reach adjust 握距調整	toolless 免工具
Pad wear adjustment 煞車塊間隙調整	TPA 調整鈕
Mounting 煞車固定座	Cantilever EVO2, Easy Mount EVO2固定座
RRP 建議售價	89,90 €
Order No. 產品編號	2 700 845 ^b



E-BIKE READY

PROVEN ERGONOMICS
经验证的人体工学设计

ELEGANT DESIGN AND HIGH-QUALITY MATERIALS 典雅设计与高质感用料

TOOLLESS BRAKE PAD ADJUSTMENT 免工具煞车块调整

HS11

The youngest in the family is just as reliable as its sisters, scoring with high braking power in everyday cycling. It's also comfortable, thanks to the ergonomic lever blade design.

在HS家族里排行最小的HS11，不让其姐妹专美于前，凭着可靠的性能表现崭露头角，符合人体工学的拉柄设计，提供了更舒适的手感。

Weight 重量	435 g
Master 本体	Carbotecture® 独家碳纤维复合材质
Lever blade 拉柄	3-Finger, Carbotecture® 3指式独家碳纤维复合材质拉柄
Reach adjust 握距調整	-
Pad wear adjustment 刹車快間隙調整	T25 tool T25星型起子
Mounting 刹車固定座	Cantilever EVO2, EVO2固定座 Easy Mount 简易安装固定座
RRP 建议售价	69,90 €
Order No. 产品编号	2 701 214 ^c



E-BIKE READY

THE CAREFREE BRAKE
无需费心照顾的刹车系统

ERGONOMIC AND STRONG 符合人体工学坚固耐用

PRECISE CONTROL 提供精准的操控性

All prices including 19% VAT. 所有价格包括19% 增值税。

^b 2 700 845: 3-fingers, EVO2 / 2 700 846: 3-fingers, Easy Mount 3指拉柄, EVO2固定座 / 3指拉柄, 轻松安装固定座

^c 2 701 214: 3-fingers, EVO2 / 2 701 252: 3-fingers, Easy Mount 3指拉柄, EVO2固定座 / 3指拉柄, 轻松安装固定座







**S-PEDELEC
BRAKES**

S-PEDELEC BRAKES TECHNOLOGY

电动自行车刹车创新科技

1 BRAKE POWER

刹车制动力

4 pistons for maximum braking power and stability

四活塞卡钳：提供更强劲制动力与稳定性

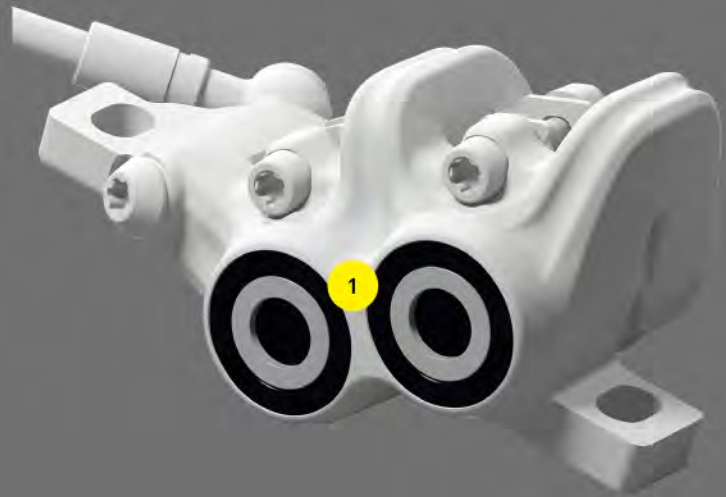
2 S-PEDELEC SWITCH

高速电动自行车断电系统

Activates brake light and/or controls the motor cut-off

实时控制刹车灯及电控马达

实时控制刹车灯及电控马达



3 BALL-END LEVER BLADE

圆球拉柄

More safety for s-Pedelecs with the ball-end lever blade

球型式拉柄确保使用者更安全



 **DESIGNED AND
ENGINEERED IN GERMANY**
德国设计和研发

**5 YEARS LEAK
PROOF GUARANTEE**
5年防漏油保固

 **FILLED WITH
ROYAL BLOOD**
使用皇家血统矿物油

MT5e

Brakes everything including the motor – experience gained from the motorcycle sector coupled with know-how for s-pedelects. The braking force of the 4 pistons and outstanding stability make s-pedelects much safer.

MAGURA凭借其其在摩托车领域扎实的经验和专业知识，在高速电动车行业游刃有余。四活塞刹车也因其强大的制动力和稳定性能，为高速电动自行车骑行者带来更安全保障。

Weight 重量	275 g
Master 刹车本体	Carbotecture® 独家复合纤维材质
Lever blade 刹车拉柄	3-finger ball-end, aluminium with switch 三指铝合金圆球拉柄， 搭配可断电开关
Reach adjust 握距调整	3 mm allen key 3号内六角扳手
Bite adjust 灵敏度调节	-
Pistons 活塞数	4
RRP 建议售价	139,90 €*
Order No. 产品编号	2 700 984 †



GENES OF THE MT7 承袭MT7强大基金

S-PEDELEC TECHNOLOGY
高速电动自行车创新技术

HIGH STABILITY 高度稳定可靠



Photo: Philip Ruopp

All prices including 19% VAT. 所有产品包含19%的增值税

* without rotor/adaptor 没有碟盘与转接座

† 2 700 984: HIGO-Closer 常闭式 † 2 700 985: HIGO-Opener 常开式

S-PEDELEC BRAKES

MT4e

Here, safety is spelled 4e: even before braking starts, a switch in the MT4e activates the brake light and/or cuts off the motor. Our all-round disc brake with all the features for s-pedelects.

安全的代名词MT4e!在安全作动前, MT4e就已经准备好启动刹车灯或截断电控马达, 充分展示高速电动自行车刹车的全部性能。

Weight 重量	250 g
Master 刹车本体	Carbotecture® 独家复合纤维材质
Lever blade 刹车拉柄	3-finger ball-end, aluminium with switch 三指铝合金圆球拉柄 搭配断电开关
Reach adjust 握距调整	3 mm allen key 3号内六角扳手
Bite adjust 灵敏度调节	-
Pistons 活塞数	2
Not available in the aftermarket. 修补市场与零售市场暂无发售	



S-PEDELEC TECHNOLOGY
高速电动自行车的创新科技

PERFECT ALL-ROUNDER 全能型刹车

LEVER BLADE FOR SAFETY 拉柄设计符合安全规范

HS33e

The HS33 Re is a hydraulic rim brake specially designed for s-pedelec. With high braking power and perfect ergonomics, it's the ideal partner for town and country.

HS33e是专为高速电动自行车设计的液压轮圈刹, 拥有更强劲的刹车力道, 并且刹车拉柄符合人体工程学理念, 是通勤的理想选择。

Weight 重量	500 g
Master 刹车本体	Carbotecture® 独家复合纤维材质
Lever blade 刹车拉柄	3-finger ball-end, aluminium with switch 三指铝合金圆球拉柄 搭配可断电开关
Reach adjust 握距调整	T25 tool T25星型螺丝起子
Pad wear adjustment 刹车块间隙调整	TPA 调整钮
Mounting 刹车固定座	Cantilever EV02
Not available in the aftermarket. 零售市场与修补市场暂不发售	



S-PEDELEC TECHNOLOGY
高速电动自行车创新科技

THE LATEST MODEL OF THE CAREFREE BRAKE RANGE 最新免保养轮圈刹

ELEGANT DESIGN AND HIGH-QUALITY MATERIALS 优雅的设计与高质的材料







DROPPER SEATPOST

DROPPER SEATPOST

VYRON eLECT TECHNOLOGY

无线升降座管智能科技

1 VARIABLE POSITIONING

无段式调整
Variable positioning of the saddle height possible
使用者可轻松调整到合适的高度

2 SPEED

反应迅速
Fast reaction and extension speed
快速反应，即刻调整座管高度

3 PLUG' N' PLAY

即插即用
Easily mounted without cables
无走线束缚，安装方便、快捷

4 EXCHANGEABLE ELECTRONIC UNIT

可更换电子元件
Electronic unit can be exchanged separately during service support
保质期内，电子元件可单独更换

5 REMOTE

无线遥控
Control of the seatpost via the remote on the handlebar
可借助装于车把上的遥控装置轻松调节座管高度



No cables – no problems.

The innovative eLECT technology by MAGURA controls the dropper seatpost VYRON electronically and wirelessly via the remote. No time-consuming wiring problems – MAGURA gives you control at the push of a button. MAGURA suspension forks and rear shocks from the year 2010 can also be converted to the eLECT technology with the eLECT upgrade kit – then the remote can control all the products.

无线调控-不受限

由MAGURA创新开发的无线伸缩座管，运用电子及无线科技，使用者只要轻松按下遥控器的按钮，就能轻松使用控制，方便省时且迅速。MAGURA在2010年后推出的避震前叉及阻尼，可透过eLECT智慧套件进行升级，同样只需一个遥控器，就可以控制所有产品。

VYRON eLECT SEATPOST

No cables, no laborious cable routing. The VYRON eLECT seatpost with wireless remote control is a technical trail-blazer. The hydraulic system can be infinitely adjusted to the desired height by pushing the remote.

没有走线束缚，更无需费心保养。VYRON eLECT无线遥控升降座管是技术的开拓者。产品升级后，反应速度更快，使用者可以随时将座椅调整到理想高度。

Weight 重量	595 g
Material 材质	Aluminum 黑色阳极处理铝合金
Lenght 长度	396/421/446 mm (depending on model) (以型号为准)
Travel 行程	100 mm/125 mm/150 mm variable positioning (depending on model) 无段式调整(以型号为准)
Charging connector 充电连接	Micro-USB Micro-USB接口
Charging time 充电时间	approx. 3 h 约3小时
Charge after 充电续航	approx. 400 activations 可使用400次左右
Remote 遥控器	Wireless Remote Control incl. Remote Cap 无线遥控包括遥控盖
RRP 建议售价	449,90 €
Order-No. 产品编号	Ø 30,9 mm: 2 701 423 / 150 mm 2 701 424 / 125 mm 2 701 425 / 100 mm Ø 31,6 mm: 2 701 426 / 150 mm 2 701 427 / 125 mm 2 701 428 / 100 mm



WIRELESS 无线科技

VARIABLE POSITIONING
无段式调整

PLUG' N' PLAY 即插即用



MOUNTAINBIKE
Leserwahl 2016
Innovation des Jahres
3. Platz



REMOTE CAP 遥控盖

RRP 建议售价 9,90 €
Order-No. 2 701 282
产品编号

The Remote Cap makes using the VYRON child's play. Safety at the push of a button, even in tricky situations: the large contact area between the thumb and the remote makes every thumb pressure count.

遥控盖小巧轻便，操控简单便捷。遥控盖有效增大接触面积，在任何复杂的地形下，都可轻松按下按钮，即使带着手套，也丝毫不影响正常操作。

All prices including 19% VAT. 所有价格包括19% 增值税。







TUNING PARTS

TUNING PARTS

LEVER BLADES

我选我刹：拉柄

Choose your brake's contact point and lever blade ergonomics.
选择适合你的刹点与切合人体工程学理念的拉柄

For Carbotecture SL® (MT6/MT8/MT7/MT TRAIL CARBON/SL from MJ 2015)
刹车本体为Carbotecture SL®
(适用于MY2015年后的MT6/MT8/MT7/MT TRAIL CARBON/SL)



HC LOIC BRUNI LEVER BLADE

HC LOIC BRUNI拉柄

1-finger aluminium lever blade, Reach Adjust with tool (PU = 1 piece)

单指铝合金拉柄，需工具调节握距（单位：1/件）

Order Number

产品编号

RRP

建议售价

2 701 962

79,90 €



HC3 LEVER BLADE

HC3拉柄

1-finger aluminium, Ratio Adjust with tool (PU = 1 piece)

单指铝合金拉柄，需工具调节刹把杠杆比（单位：1/件）

Order Number

产品编号

RRP

建议售价

2 701 251

67,90 €



HC CARBON LEVER BLADE

HC碳纤维拉柄

1-finger Carbon, Reach Adjust with tool (PU = 1 piece)

单指碳纤维拉柄，需工具调节握距（单位：1/件）

Order Number

产品编号

RRP

建议售价

2 701 631

89,90 €



HC LEVER BLADE

HC拉柄

1-finger aluminium, Reach Adjust with tool (PU = 1 piece)

单指铝合金拉柄，需工具调节握距（单位：1/件）

Order Number

产品编号

RRP

建议售价

2 701 247

35,90 €



1-finger aluminium, with toolless Reach Adjust (PU = 1 piece)

单指铝合金拉柄，免工具体调节握距，黑色（单位：1/件）

2 701 246

37,90 €

1-finger aluminium, with toolless Reach Adjust, chrome (PU = 1 piece)

单指铝合金拉柄，免工具调节握距，铬银色（单位：1/件）

2 701 248

37,90 €



2-FINGER LEVER BLADE

两指拉柄

2-finger aluminium, with toolless Reach Adjust (PU = 1 piece)

两指铝合金拉柄，免工具调节握距

Order Number

产品编号

RRP

建议售价

2 701 215

37,90 €

#CUSTOMIZE YOURBRAKE

For Carbotechnology (MT SPORT/MT4/MT5/MT eSTOP/MT TRAIL SPORT from MJ 2015)
 刹车本体为Carbotechnology
 (适用于MY2015年后的MT SPORT/MT4/MT5/MT Estop/MT TRAIL SPORT)



HC LOIC BRUNI LEVER BLADE

HC LOIC BRUNI 拉柄

1-finger aluminium lever blade, Reach Adjust with tool (PU = 1 piece)

单指铝合金拉柄，需工具调节握距 (单位：1/件)

Order Number

产品编号

RRP

建议售价

2 701 963

79,90 €



HC LEVER BLADE

HC 拉柄

1-finger aluminium, Reach Adjust with tool, for MT TRAIL SPORT, from MY2017 (PU = 1 piece)

单指铝合金拉柄，需工具调节握距，适用于MY2017年后的MT TRAIL SPORT (单位：1/件)

Order Number

产品编号

RRP

建议售价

2 701 369

34,90 €

1-finger aluminium, Reach Adjust with tool, for MT5 from MY2015 (PU = 1 piece)

单指铝合金拉柄，需工具调节握距，适用于MY2015年后的MT5 (单位：1/件)

2 701 249

34,90 €

1-finger aluminium, Reach Adjust with tool, for MT4 (PU = 1 piece)

两指铝合金拉柄，需工具调节握距，适用于MT4 (单位：1/件)

2 701 250

34,90 €



2-FINGER LEVER BLADE

两指拉柄

2-finger aluminium light-weight lever blade, Reach Adjust with tool, for MT5 or MT TRAIL SPORT, from MY2015 (PU = 1 piece)

两指轻量拉柄，需工具调节握距，适用于MY2015年后的MT5/MT TRAIL SPORT (单位：1/件)

Order Number

产品编号

RRP

建议售价

2 700 538

25,90 €



TUNING PARTS

RING KIT

我选我刹：卡钳环



RING-KIT, 2 PISTONS

二活塞卡钳环

Ring-Kit for caliper, from MY 2015 (blue, neon red, neon yellow), (PU = 6 pieces)
适用于MY2015年后的二活塞卡钳
(蓝色、霓虹红、霓虹黄) (单位：6/件)

Order Number

产品编号

2 701 239

RRP

建议售价

9,90 €

Ring-Kit for caliper, from MY 2015 (purple, red, pink), (PU = 6 pieces)
适用于MY2015年后的二活塞卡钳
(紫色、红色、霓虹粉) (单位：6/件)

2 701 722

9,90 €

Ring-Kit for caliper, from MY 2015 (white, gold, silver), (PU = 6 pieces)
适用于MY2015年后的二活塞卡钳
(白色、金色、银色) (单位：6/件)

2 701 723

9,90 €

Ring-Kit for caliper, from MY 2015 (green, cyan, mint green), (PU = 6 pieces)
适用于MY2015年后的二活塞卡钳
(霓虹绿、群青色、薄荷绿) (单位：6/件)

2 701 724

9,90 €

RING-KIT, 4 PISTONS

四活塞卡钳环

Ring-Kit for caliper, from MY 2015 (blue, neon red, neon yellow), (PU = 12 pieces)
适用于MY2015年后的四活塞卡钳
(蓝色、霓虹红、霓虹黄) (单位：6/件)

Order Number

产品编号

2 701 240

RRP

建议售价

13,90 €

Ring-Kit for caliper, from MY 2015 (purple, red, pink), (PU = 12 pieces)
适用于MY2015年后的四活塞卡钳
(紫色、红色、霓虹粉) (单位：6/件)

2701719

13,90 €

Ring-Kit for caliper, from MY 2015 (white, gold, silver), (PU = 12 pieces)
适用于MY2015年后的四活塞卡钳
(白色、金色、银色) (单位：6/件)

2701720

13,90 €

Ring-Kit for caliper, from MY 2015 (green, cyan, mint green), (PU = 12 pieces)
适用于MY2015年后的四活塞卡钳
(霓虹绿、群青色、薄荷绿) (单位：6/件)

2701721

13,90 €

INDIVIDUAL COVER



INDIVIDUAL COVERS

我选我刹：个性化饰片

For Carbotecture SL (MT6/MT8/MT7/MT TRAIL CARBON/SL from MY 2015)
刹车本体为Carbotecture SL® (适用于MY2015年后的MT 6 /MT8/MT7/MT TRAIL CARBON/SL)

RRP

建议售价

14,90 € / 19,90 €



Design your individual cover here!

扫描二维码，定制属于你的饰片

WWW.MAGURA.COM/CUSTOMIZE

HANDLEBAR CLAMPS

我选我刹：刹把固定环



SHIFTMIX HANDLEBAR CLAMP

整合式刹把固定环

Shiftmix 1+2, for Shimano I-Spec I+II left and right (pair) (PU = 1 piece left, 1 piece right)
可与Shimano I-Spec I+II 整合
(1对：左右边各一个)

Order Number

产品编号

RRP

建议售价

2 701 241

39,90 €

Shiftmix 1+2, for Shimano I-Spec I+II left
(PU = 1 piece)

2 701 242

20,90 €

可与Shimano I-Spec I+II 整合 (单个：左边)

Shiftmix 1+2, for Shimano I-Spec I+II right
(PU = 1 piece)

2 701 243

20,90 €

可与Shimano I-Spec I+II 整合 (单个：右边)

Shiftmix 3, for SRAM Matchmaker® left and right (pair)
(PU = 1 piece left, 1 piece right)

0 724 710

39,90 €

可与SRAM Trigger整合 (1对：左右各一边)

Shiftmix 3, for SRAM Matchmaker® left (PU = 1 piece)

2 700 840

20,90 €

可与SRAM Trigger整合 (单个：左边)

Shiftmix 3, for SRAM Matchmaker® right (PU = 1 piece)

2 700 841

20,90 €

可与SRAM Trigger整合 (单个：右边)

HANDLEBAR CLAMP

刹把固定环

Carbon, no screws (PU = 1 piece)

材质：Carbon, 不含螺丝 (单位：1/件)

Order Number

产品编号

RRP

建议售价

0 724 709

20,90 €

Aluminium, neon yellow, no screws (PU = 1 piece)

铝合金材质，霓虹黄，不含螺丝 (单位：1/件)

2 700 751

11,90 €

Aluminium, neon red, no screws (PU = 1 piece)

铝合金材质，霓虹红，不含螺丝 (单位：1/件)

2 700 752

11,90 €

Aluminium, neon blue, no screws (PU = 1 piece)

铝合金材质，霓虹蓝，不含螺丝 (单位：1/件)

2 700 753

11,90 €

Aluminium, chrome polished, no screws (PU = 1 piece)

铝合金材质，镀铬银，不含螺丝 (单位：1/件)

2 701 244

9,90 €

Aluminium, black, no screws (PU = 1 piece)

铝合金材质，黑色，不含螺丝 (单位：1/件)

0 724 488

9,90 €

Aluminium, silver, no screws (PU = 1 piece)

铝合金材质，银色，不含螺丝 (单位：1/件)

0 724 489

9,90 €

Carbotecture®, black, no screws (PU = 1 piece)

独家复合材质Carbotecture®, 黑色，不含螺丝
(单位：1/件)

2 700 136

7,90 €

Carbotecture®, silver, no screws (PU = 1 piece)

独家复合材质Carbotecture®, 银色，不含螺丝
(单位：1/件)

2 700 137

7,90 €

YOUR BIKE — YOUR STYLE





ORIGINAL SPARE PARTS

ORIGINAL SPARE PARTS

BEST PARTS = BEST PERFORMANCE

为最佳制动力而生 MAGURA原厂零配件



Photo: Thomas Weschta

**SAFETY
MATTERS**



BRAKE PADS OVERVIEW

刹车块与来令片总览

DISC BRAKE PADS 碟刹来令片

R-RACE 竞赛型

For those who take their equipment to the limits and require outstanding cross country or downhill braking power.

提供最大刹车力道，适用于速降或速降路况



P-PERFORMANCE 功效型

Intended for long rides, these pads offer safety together with excellent performance in all conditions.

适用于长途骑行，在任何路况下都能提供稳定、安全的制动力能



C-COMFORT 舒适型

For riders who want control rather than bite as well as a long-lasting product.

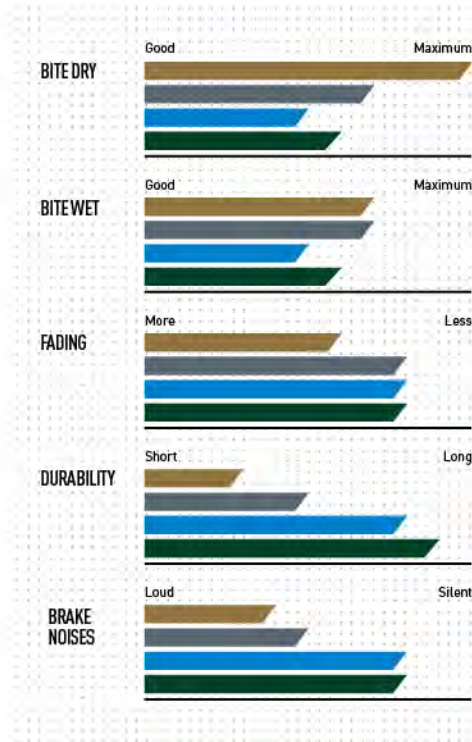
刹车操控平稳，适合寻求温和制动性能的车手，来令片的使用寿命相对较长



S-SPORT 运动型

Due to its powerful braking capabilities together with high durability and shorter bed-in time, this is a perfect brake pad for use with e-bikes.

超强操控力与强韧性、短磨合期相结合，是电助力车绝佳选择



! Important: Bed-in brake pads!

重要提示：更换来令片注意事项！

The bed-in phase is essential to ensure you get maximum braking power out of your new brake pads. To do this, accelerate to a speed of 30 km/h on a level road. Use one brake to decelerate to a standstill. Repeat this procedure at least 30 times per brake. Brake pads and rotors have now been bedded-in and will provide optimum braking performance.

来令片唯有充分磨合后才会发挥其有效的制动效能。请如下操作：将自行车加速至30km/h后，按压刹车，反复执行上述磨合操作，至少30次。充分磨合后的来令片与碟片制动性能最佳。

RIM BRAKE PADS

轮圈刹车块

Check your rim type!
选择你适合的刹车块

BLACK RED

For uncoated aluminium rims.
适用于无涂层的铝制轮圈

GREY GREEN

For hard coated aluminium and ceramic rims.
适用于硬质的铝制轮圈及陶瓷轮圈



BLACK GREY

High durability – Whether a day trip or a trip around the world. You'll only have to think about servicing your brake afterwards.

持久耐用-无论是一天的骑行，还是全球各地的长期骑行，你只需要考虑骑行结束后如何保养你的刹车

RED GREEN

High braking power – Your bike is daily in use in all weather conditions. Many traffic lights and stops require the maximum power of your brakes.

强劲制动力-在各种天气条件下，都可进行日常的自行车通勤。上班路上交通信号灯太多，走走停停？即便频繁刹车，刹车力道依旧强劲。

ORIGINAL SPARE PARTS

BRAKE PADS

原厂零配件：刹车块与来令片规格



BRAKE PAD 9.P / 9.C 来令片9.P/9.C	Order Number 产品编号	RRP 建议售价
9.P Performance – Brake pad for 4-pistons caliper from MY2015, incl. ECE marking 9.P功效型来令片，适用于MY2015年后的四活塞卡钳，已通过ECE认证	2701 627	19,90 €
9.C Comfort – Brake pad for 4-pistons caliper from MY2015, incl. ECE marking 9.C舒适型来令片，适用于MY2015年后的四活塞卡钳，以通过ECE认证	2701 626	15,50 €



BRAKE PAD 8.R / 8.P / 8.S 来令片8.R/8.P	Order Number 产品编号	RRP 建议售价
8.R Race – Brake pad for 4-pistons caliper from MY2015 8.R竞赛型来令片，适用于MY2015年后的四活塞卡钳	2701 173	29,90 €
8.P Performance – Brake pad for 4-pistons caliper from MY2015, incl. ECE marking 8.P功效型来令片，适用于MY2015年后的四活塞卡钳，以通过ECE认证	2701 628	22,90 €
8.S Sport – Brake pad for 4-pistons caliper from MY2015 8.S运动型来令片，适用于MY2015年后的四活塞卡钳	2701 994	19,90 €



BRAKE PAD 7.R / 7.P / 7.C / 7.S 来令片7.R/7.P/7.C/7.S	Order Number 产品编号	RRP 建议售价
7.R Race – Brake pad for 2-pistons caliper from MY2012 7.R竞赛型来令片，适用于MY2012年后的二活塞卡钳	2701 179	24,90 €
7.P Performance – Brake pad for 2-pistons caliper from MY2012, incl. ECE marking 7.P功效型来令片，适用于MY2012年后的二活塞卡钳，已通过ECE认证	2701 625	19,90 €
7.C Comfort – Brake pad for 2-pistons caliper from MY2012, incl. ECE marking 7.C舒适型来令片，适用于MY2012年后的二活塞卡钳，已通过ECE认证	2701 624	15,50 €
7.S Sport – Brake pad for 2-pistons caliper from MY2012 7.S运动型来令片，适用于MY2012年后的二活塞卡钳	2701 993	17,90 €



RIM BRAKE PADS

轮圈刹车块

Brake pad black for HS11/HS22/HS33
黑色刹车块，适用于HS11/HS22/HS33

Brake pad grey for HS11/HS22/HS33
灰色刹车块，适用于HS11/HS22/HS33

Brake pad red for HS11/HS22/HS33
红色刹车块，适用于HS11/HS22/HS33

Brake pad green for HS11/HS22/HS33
绿色刹车块，适用于HS11/HS22/HS33

Order Number

产品编号

2 701 576

0 321 407

0 720 423

0 720 439

RRP

建议售价

19,90 €

19,90 €

23,90 €

23,90 €



Photo: Philip Ruopp

All prices including 19% VAT. 所有价格包括19% 增值税。

ORIGINAL SPARE PARTS

ROTORS

原厂零配件：碟盘



NEW

MDR-P

Offering a special patented interlocking of the outer and inner rings (Dovetail Interlink Technology) giving optimum braking performance even under heavy loads. In addition, maximum heat resistance and stability.

内环与外环连接的内锁式专利技术(内部连接技术)，使得在超负荷载重下也能表现其充分的制动性能，同时，增强其耐热性与稳定性。

WARNING: Never use rotor with centerlock adapter!

警告：不得用于带有中心锁固式转接座



Diameter 尺寸	Weight 重量	Order Number 产品编号	RRP 建议售价
203 mm	216 g	2 701 938	55,00 €
220 mm	241 g	2 701 939	55,00 €



NEW

MDR-C

Thanks to the additional connecting ring the one-piece rotor, optimized for e-bikes is particularly stiff, vibration resistant and the ideal all-rounder - whether on city, trail or e-bike.

碟盘增加更多的内部连接环，满足了电动助力车对于刚性的需求，其抗震性和全环绕性无论是在城市通勤、越野还是电动助力车都适用。



Diameter 尺寸	Weight 重量	Order Number 产品编号	RRP 建议售价
180 mm	162 g	2 701 918	30,00 €
203 mm	222 g	2 701 919	30,00 €



STORM SL.2
超轻风暴SL.2

Fantastic brake power with minimum weight. Optimized for the cross Country use.
超轻绝佳制动性能，适用于山地越野车。

Diameter 尺寸	Weight 重量	Order Number 产品编号	RRP 建议售价
160 mm	100 g	2 701 348	35,00 €
180 mm	118 g	2 701 349	35,00 €



STORM HC INCL. ABE
风暴HC (通过ABE认证)

Optimized for best braking power at high loads as well as its light weight. Recommended for trail and Gravity use.

轻量且在高负荷状态下，具有强劲制动力，适用于林道和砂石路。



Diameter 尺寸	Weight 重量	Order Number 产品编号	RRP 建议售价
160 mm	121 g	2 700 928	30,00 €
180 mm	140 g	2 700 929	30,00 €
203 mm	173 g	2 700 930	30,00 €



STORM CL
风暴CL

A two-piece rotor for the best brake power at high loads. Equipped with a centerlock fitting for corresponding hubs.

全新推出二件式中心锁固式碟盘Storm CL,在高负荷状态下依然拥有绝佳制动表现，配备对应的中心锁。

For quick-release axle incl. lockring
快拆式锁固，包含锁固环

Diameter 尺寸	Weight 重量	Order Number 产品编号	RRP 建议售价
160 mm	194 g	2 701 370	35,00 €
180 mm	221 g	2 701 371	35,00 €
203 mm	253 g	2 701 372	35,00 €

For thru axle inc. lockring
轴心式锁固，包含锁固环

Diameter 尺寸	Weight 重量	Order Number 产品编号	RRP 建议售价
160 mm	196 g	2 701 446	35,00 €
180 mm	223 g	2 701 447	35,00 €
203 mm	255 g	2 701 448	35,00 €

ORIGINAL SPARE PARTS

ADAPTER

原厂零配件：转接座

Adapters PM / IS 转接座



QM 40

PM 160-180 / PM 140-160 (PU = 1 piece)

Order Number

产品编号

2 700 515

RRP

建议售价

10,00 €



QM 41

IS-180-R (PU = 1 piece)

Order Number

产品编号

2 700 516

RRP

建议售价

10,00 €



QM 42

PM 160-203 (PU = 1 piece)

Order Number

产品编号

2 700 517

RRP

建议售价

10,00 €



QM 43

IS-160-F (PU = 1 piece)

Order Number

产品编号

2 700 518

RRP

建议售价

10,00 €



QM 5

IS-203-F (PU = 1 piece)

Order Number

产品编号

0 722 321

RRP

建议售价

10,00 €



QM 9

IS-203-R (PU = 1 piece)

Order Number

产品编号

0 722 325

RRP

建议售价

10,00 €



QM 12
IS-160-R/ IS-180-F (PU = 1 piece)

Order Number	RRP
产品编号	建议售价
0 722 426	10,00 €



QM 44
PM 180-203 (PU = 1 piece)

Order Number	RRP
产品编号	建议售价
2 701 967	10,00 €



QM 45
PM 180-220 / PM 140-180 (PU = 1 piece)

Order Number	RRP
产品编号	建议售价
2 701 940	10,00 €

Adapter Flatmount
平装式转接座



QM 50
QM 50 Flatmount adapter front wheel F140/160 mm, incl. M5 x 10 countersunk head screws and screws FM M5x14 T25 (PU = 1 set)
QM 50平装式转接座用于前轮，搭配140mm/160mm碟盘、M5X10的沉头螺丝和M5X14的T25的螺丝

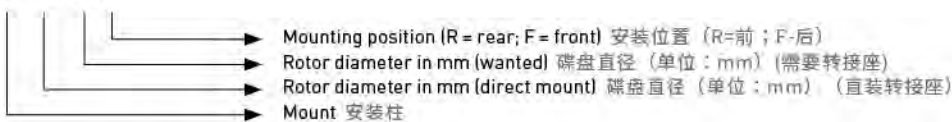
Order Number	RRP
产品编号	建议售价
2 701 598	15,00 €



QM 51
QM 51 Flatmount adapter rear wheel R160, incl. countersunk screws M5 x 10 T25 (PU = 1 set)
平装式转接座用于后轮，搭配 M5X10的沉头螺丝

Order Number	RRP
产品编号	建议售价
2 701 600	15,00 €

PM 180-220 F



ORIGINAL SPARE PARTS

SERVICE PRODUCTS

原厂零配件 - 维修保养品



ROYAL BLOOD

皇家血统矿物油

MAGURA Royal Blood, 100 ml
 MAGURA Royal Blood, 250 ml
 MAGURA Royal Blood, 1000 ml

Order Number

产品编号

0 721 630
 0 721 632
 0 721 631

RRP

建议售价

6,50 €
 17,50 €
 33,50 €



FORK MEISTER GREASE

避震前叉润滑油膏

for bushings from MY 2012
 適用於MY 2012年後的襯套潤滑

Order Number

产品编号

0 724 807

RRP

建议售价

24,90 €



SUSPENSION BLOOD

避震前叉用油

Suspension Blood Typ 2 SAE 5ISOVG 25, damping oil,
 500 ml
 避震前叉專用阻尼油 · 500ml

Order Number

产品编号

0 731 120

RRP

建议售价

13,90 €



SERVICE KIT
维修保养工具组

Service Kit (for disc and rim brakes), Contents: 100 ml Royal Blood, 2 x syringes incl. bleed tubing, Torx T25, 2 x installing clamps, small parts and inserts for hose shortening

维修保养工具组适用于液压碟刹及轮圈刹。内含：100ml皇家血统矿物油、2个注油针筒及软管、T25星型螺丝起子、2个安装固定座、剪管用的油针及小零件

Order Number	RRP
产品编号	建议售价
2 700 191	33,00 €



PROFESSIONAL BLEED KIT
专业灌油组

Professional bleed kit (for disc and rim brakes), contents: Syringe, bleed tubing with EBT filling plug, bleed tubing with thread attachment, 250 ml plastic bottle including hook, 250 ml Royal Blood

专业灌油组适用于液压碟刹及轮圈刹。内含：注油针筒、EBT接头软管、有牙纹的转接头软管、250ml配有挂钩的塑胶油壶、250ml皇家血统矿物油

Order Number	RRP
产品编号	建议售价
0 724 492	46,90 €



VYRON BLEED KIT
灌油组

VYRON bleed kit, contents: Filling needle incl. adapter, shut-off valve, 3 mm allen key (long)

VYON灌油组，内含：转接头灌油连接工具、开关阀门、三号内六角扳手（长）

Order Number	RRP
产品编号	建议售价
2 701 404	79,90 €

APPAREL

2020



Photo: Philip Ruggipp



MAGURA

maloja

STREETWEAR



Photo: Philip Ruopp



MAGURA 1893 T-Shirt Men "Black"/Women 玛古拉1893 T-恤 男款 黑色/女款

The 1893 shirt for men and women is loosely cut and made of organic cotton. Finished with the image of the Ermstal - where MAGURA is based - the shirt is particularly eye-catching.

玛古拉1893 T-恤男女款，宽松剪裁设计，采用有机棉制成，图案取自玛古拉总部附近的Erristal 山野风光。

Style 款式 Men男款 / Women女款
Sizes 尺寸 男款 S-XXL / 女款 M-XL
RRP 建议售价 44,00 € 欧元



MAGURA 1893 Street Hoodie

玛古拉1893 街头帽衫

The hoodie is made of 100% cotton finished with a high-quality print. Thanks to the collar, it is comfortable to wear all year round.

该帽衫为100%纯棉面料，图案采用高品质印刷术印制，一年四季穿着都舒适。

Style 款式 Unisex 男女同款
Sizes 尺寸 XS-L
RRP 建议售价 79,00 € 欧元



MAGURA 1893 Hybrid Jacket

玛古拉1893夹克

The Hybrid jacket is made of a high-grade wool blend on the outside and soft fleece on the inside. Thanks to the Primaloft inserts on the chest and back, it is the perfect companion on cooler days.

混合材料夹克外层为高档羊毛面料，内层为软羊毛材料，在胸前及后背加入Primaloft（一种超柔软防水性超细纤维棉）保暖材质，即使身处潮湿环境，也拥有极佳保暖效果，是寒冷日子里的完美伴侣。

Style 款式 Unisex 男女同款
Sizes 尺寸 XS-XL
RRP 建议售价 199,00 € 欧元



MAGURA Beanie / Cap

无檐卷边便帽/帽子

Style 款式 Unisex 男女同款
Sizes 尺寸 One Size 均码
RRP Beanie 32,00 € / Cap 35,00 € 欧元



Photo: MAGURA



MAGURA 1893 Jersey
MAGURA 1893 Jersey Longsleeve

玛古拉1893短袖运动衫
玛古拉1893长袖运动衫

Bike jersey made of highly functional Airdry material. The jersey stays fresh and odour-free thanks to Polygiene technology. Longsleeve: with an integrated cleaning cloth for goggles inside the garment.

采用速干面料制成，同时添加了聚酯纤维。透气性好，时刻保持衣物干燥清新，无异味。长袖运动衫设计贴心，袖子的内衬可作为清洁布，用于擦拭护目镜。

Style 规格 Unisex 男女同款
Sizes 尺寸 S-XL
RRP 建议售价 76,00 € / 99,00 € 欧元



MAGURA 1893 Short
玛古拉短裤

These bike shorts made of polystretch material stretch flexibly with every movement in any sports, not only biking, thanks to their stretch insert in the rear waistband.

采用聚合材料制成，腹部为松紧带设计，让您在进行各种运动的时候也可以灵活伸展，运动自如。

Style 规格 Unisex 男女同款
Sizes 尺寸 S-XL
RRP 建议售价 84,00 € 欧元

MAGURA 1893 Sports Socks Mid
玛古拉1893运动袜中筒

These sports socks have Quick Dry Technology and wide, elastic ankle cuffs made of Microlon fabric, making them extremely comfortable.

采用速干面料制成，脚踝处采用超细纤维 Microlon 亲肤布料，柔软舒适。



Style 规格 Unisex 男女同款
Sizes 尺寸 36-42 欧码
RRP 建议售价 16,00 € 欧元

BIKEWEAR

STYLED BY
MALOJA & MAGURA



**MAGURA #WHOSTOPSYOU
Endurance Bib Short**

耐力背带短裤

Endurance Bib Short with Long Distance pad for long tours. Thanks to flat seams and silicone elastics on the legs, it offers excellent comfort without slipping.

耐力背带短裤，设计使用了长护垫，适合长途旅行。平整的缝结和腿部有机硅弹性材料，让您骑行的时候舒适且不会打滑。

Style 规格 Unisex 男女同款
Sizes 尺寸 S-XXL
RRP 建议售价 80,00 € 欧元



**MAGURA #WHOSTOPSYOU
Endurance Jersey**

耐力运动衫

Endurance jersey with tight fit for comfort and aerodynamics. Three back pockets and one zipped side pocket provide plenty of room.

玛古拉紧身版耐力运动衫，符合空气动力学设计，为您骑行带来舒适感。三个后袋和一个拉链式侧袋也为您提供足够的空间。

Style 规格 Unisex 男女同款
Sizes 尺寸 XS-XXL
RRP 建议售价 70,00 € 欧元



More information about the products: www.magura.com
想要了解更多关于玛古拉的信息，请登录：www.magura.com

SPONSORED RIDERS AND TEAMS 赞助车手及车队



**FABIO
WIBMER**

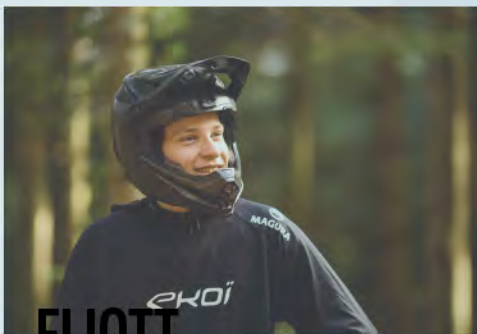
AWESOME RIDERS
AND FRIENDS!



**DANNY
MACASKILL**



**LOIC
BRUNI**



**ELLIOTT
LAPOTRE**



**BRETT
TIPPIE**



**CUBE GLOBAL
SQUAD**



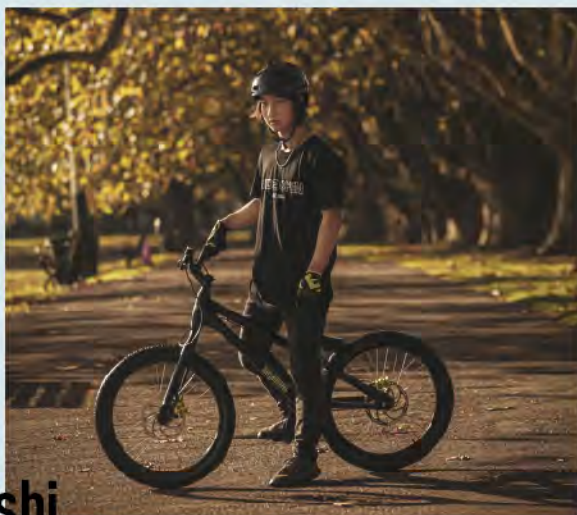
**GEHRIG
TWINNS**

ASIAN ATHLETES
亚洲赞助车手



贵州省山地
自行车队

米久江，余光伟，王仁涛，陈科宇，黄丽，朱雄磊...等



Yuki Kishi



Team Chiru
MAGURA

Team Chiru MAGURA

Myriam GUILLOT-Boisset、Jacky Boisset、Pierre A. LeMagan、
JOACHIM Mendler、Fraser Young、Frederic GOMBERT、
Nicolas Cambus、Sophie Giovane等

更多车手及车队

Bryn Dickerson、Yuki Kishi、Koutarou Utsu、Yutaka Tamaru、Ryoga Izumino、Junichi Yamada、Tarou Urakami、Daiki Takahashi、Yuta Kurise、Kenji Mukaihara、Yoshitaka Nakahara、Kohei Maeda、Saori Hoteida、Shin Yamanaka、Steve Chewy Gould、Emerson YIP、Yiptat Chen、Chan Chiu Ki henry、LAI KOWK LEUNG BLAKE、BRAIN COOK、Davide Tartaglia、Ben Forbes、Dan Irwin、Rhiannan Nye、Laura Renshaw、Lucy Mackie、Ryan Gilchrist、Mike Ross、Jonathan Poole、Jerich Farr、Eboy Farr、Gabriel Amigo、Ariana Dormitorio、Donjie Dormitorio、JR Barba、Microprogram Circus Cycling Team

享有玛古拉 这件事你一定要知道！

感谢朋友们对“大神首选，德国精品MAGURA玛古拉”的支持，车友对安全舒适的骑乘要求，许多人纷纷指定使用玛古拉的刹车及相关产品，常通过微信公众账号询问玛古拉有否电商渠道购买，在此提供给车友最佳购买及相关服务渠道。

- 玛古拉商贸（上海）有限公司
电话：21-60770983
- 沈阳德润升商贸有限公司
QQ：1649818369
WeChat：18240196902
电话：024-84844129
- 邢台梦想单车 / MXBIKE
WeChat：18631911828
- MAGURA玛古拉售后服务特约商：深圳特仕达

温馨提醒

玛古拉的五年防漏油保固政策不支持倒货、水货、窜货产品，消费者在互联网选购产品前，先与玛古拉商贸（上海）有限公司确认货品来源，避免自身权益受损。

玛古拉商贸（上海）有限公司及任何经销商收到保固服务需求时，要彻底调查商品来源，如果属于上述非保固产品，将加收超过产品价值的相关服务费用。

符合保固条件下的任何保固服务的申请，必须与最初购买产品的经销商联系，即使不在索赔人的现居住国。保固经由经销商发布。

如何知道您的产品是否适用于保固？欢迎通过玛古拉商贸（上海）有限公司微信公众号洽询。



MAGURA NETWORK



Follow us:



Facebook



Instagram



Wechat



Weibo



MAGURA ASIA LIMITED CO.
No.9, Industrial Park 10th Road, Taichung City, 40755 Taiwan
+886 4 2359 8555 · info@magura.com.tw · http://www.magura.com.tw

©MAGURA, All rights reserved. Features may be subject to change